

ABM MODULES COMPLETE LISTING

MANUFACTURING

Designed to simplify, organise, manage and control every step and element of a business's manufacturing, from planning to production, raw materials to finished goods. Not only does the manufacturing system assist in efficiency and productivity, it also provides the tools for management and operation of many other business activities related to the manufacturing process.

CUSTOMER RELATIONSHIP MANAGEMENT (CRM)

CRM is a powerful, functional and affordable option for improving the management of business relationships with clients. If you are determined to grow your customer base, strengthen your existing customer relationships and effectively manage your sales team and marketing campaigns, then CRM is what you need.

JOB AND TIME SHEETING

Designed to provide a fast, flexible and efficient tool for recording and managing staff time against jobs and projects. The module has the ability to set up and charge disbursements to jobs and comes with an enhanced job management viewer for monitoring purposes. Reduce the unnecessary effort and hassle of daily time management, while creating streamlined processes for billing and job management.

STRUCTURED STOCK

Used to cater for businesses whose stock requires a "segmented" structure. Because of its open design, it is applicable to a variety of businesses in areas such as fashion, timber, sporting equipment, health products, construction materials and more. The module allows the business to set up product types in ABM with each collection containing segments, such as styles, colours, sizes, weights, dimensions, etc.

IMPORT COSTING

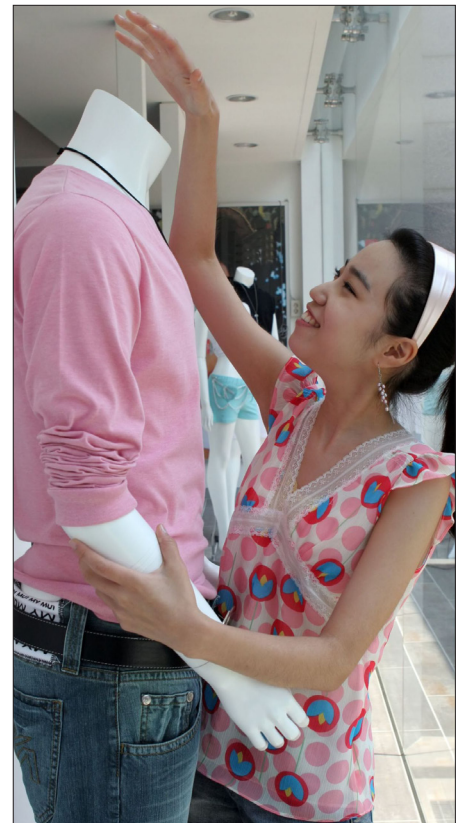
An ideal application for users who need to automatically calculate the landed costs of imported inventory. The module is ideal for importers who finalise prices before receiving all invoices all invoices from suppliers for shipment costs. Costs and shipping orders are able to be effectively managed and controlled by separating individual user-defined shipment costs and apportioning them by units of the order. Costs are then tracked and used to control margins over time with further "What if" analysis available to assist with planning.

ECOMMERCE

E-Commerce enables users to effortlessly set up an online shop with full accounting system integration. Updates to prices are feed from the accounting system through to the website, as well as automatic reordering from the website through to the accounting system. Templates provide a range of "out-of-the-box" websites which can be tailored to suit the business brand.

SERVICE MANAGEMENT

Service Management is ideal for service companies who supply on-site service to their clients. It allows the tracking of a firm's personnel by time expenditure and revenue, monitors and dispatches calls to mobile personnel, logs client service history, and provides customer billing and reporting features. The system is applicable to a wide range of service industries such as equipment servicing, monitoring, field engineers, security, on-site services, tradesman, etc.



ADVANCED
BUSINESS
MANAGER

Freephone: 1800 067 864 . www.advancedbusinessmanager.com.au

ABM MODULES COMPLETE LISTING



BUSINESS INTELLIGENCE

A data mining application which provides from a “bird’s eye view” to an in-depth analysis of your business and its profitability. Identify the strengths and weaknesses of your business through analytical assessment, costs and revenue comparisons, ratio and bottom line analysis, customer and staff performance review, and a range of in-depth analysis tools. With the aim to improve business efficiency and profitability, the module focuses on delivering relevant information through flexible data mining as well as easy to interpret visually attractive interfaces.

PROJECT INVOICING

Project Invoicing allows you to invoice charges to a job according to variable criteria, allowing fast, flexible and simple invoice or draft invoice creation for customer projects and jobs. It lets the user choose the amount to invoice, and the value of work in progress to be set-off against revenue.

SUBCONTRACTOR CLAIMS

The module is designed for entry of subcontractor claims against a job or project. This allows subcontractors to be setup as suppliers in the system and assign them to specific jobs or projects, allowing the processing of interim claims submitted from subcontractors for work done at a stage.

WAREHOUSING

ABM’s Warehousing module provides logical control and organisation of stock, allowing users to create a hierarchal structure in each warehouse with multiple aisles, bins, etc and a waiting area for goods not yet put away. The module uses “bins” to organise and group stock depending on the user’s grouping method, location, level, stage, etc.

DOCUMENT SERVER

The module allows the workload for time intensive document generation to be moved from an individual work station to a designated document server. The module also allows for consolidation of multiple forms into a single email or fax for convenience and size requirements.

BRANCH MANAGEMENT

ABM Branch is the essential multi-branch management tool, allowing your system to effectively control operations through an easy to use interface. The module provides management of the user permissions/visibility, setup of specific bank accounts, monitoring of customer and supplier lists, as well as control of stock allocation across multiple branches.

ASSETS MANAGEMENT

Designed to provide comprehensive tracking of fixed assets within one or multiple businesses. With a great deal of flexibility, the module is simple to operate and caters for a variety of assets with extensive reporting and costing options available. It also features a fully integrated lease module for management of various types of leases from finance, operating and hire purchase.



ADVANCED
BUSINESS
MANAGER

Freephone: 1800 067 864 . www.advancedbusinessmanager.com.au