

## Support Bulletin # 106

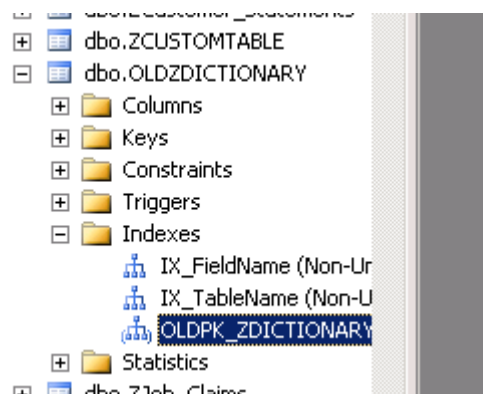
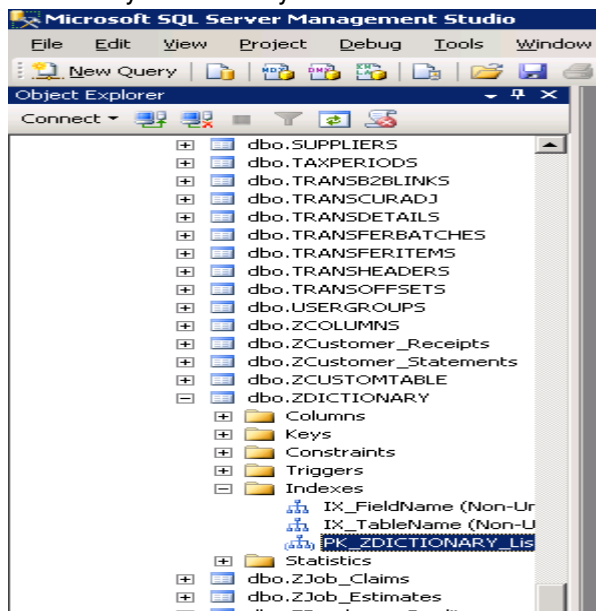
### How to copy one table into another

There are some instances where it is a requirement to copy one existing table into a brand new table with the same table name usually due to an index corruption

Below is an example of how to copy the ZDICTIONARY table to a new ZDICTIONARY table.

Instructions to copy ZDictionary table

1. Rename existing ZDictionary to something else (OldZdictionary). When you rename the Zdictionary make sure you also rename the PK index (see screenshot below)



2. Once you have renamed the ZDictionary then create a new ZDictionary (script below – make sure you replace Evaluation Company with the correct database name)

```
USE [EvaluationCompanyAustraliaSQL]
GO
```

```
/****** Object: Table [dbo].[ZDICTIONARY]   Script Date: 09/21/2011 12:01:11 *****/
SET ANSI_NULLS ON
GO
```

```
SET QUOTED_IDENTIFIER ON
GO
```

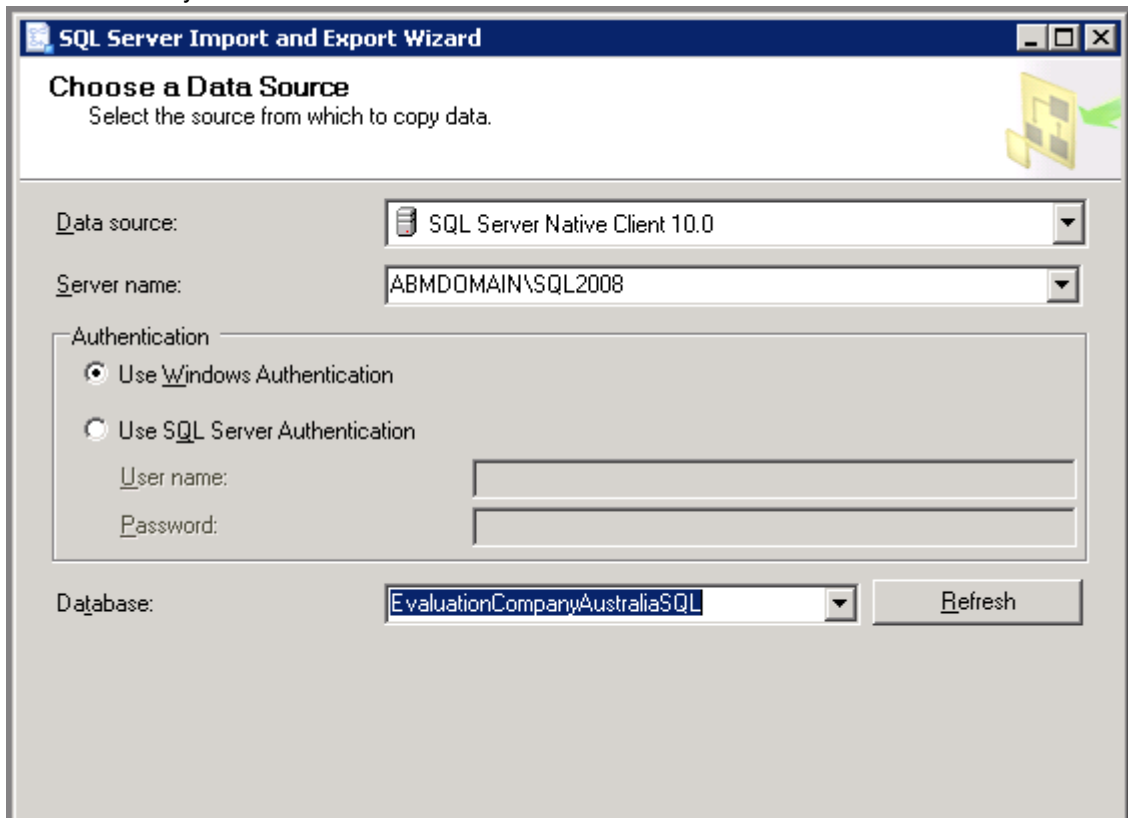
```
SET ANSI_PADDING ON
GO
```

```
CREATE TABLE [dbo].[ZDICTIONARY](
    [TableName] [char](16) NOT NULL,
    [FieldName] [char](16) NOT NULL,
    [ListOrder] [int] NOT NULL,
    [FieldType] [char](1) NOT NULL,
    [FieldSize] [decimal](15, 4) NOT NULL,
    [FullDescription] [char](50) NOT NULL,
    [ShortDescription] [char](50) NOT NULL,
    [TabNumber] [int] NOT NULL,
    [OptionList] [text] NULL,
    [VersionNo] [decimal](15, 4) NOT NULL,
    [CanImport] [bit] NULL,
    [CanExport] [bit] NULL,
    [Notes] [char](50) NULL,
    [Indexed] [bit] NULL,
    [NotNull] [bit] NULL,
    [ShowInLookupList] [bit] NULL,
    [TransactionEntry] [bit] NULL,
    [TransactionTypes] [char](80) NULL,
    [LineItemFormula] [text] NULL,
    [LineItemMethod] [int] NULL,
    CONSTRAINT [PK_ZDICTIONARY_ListOrder] PRIMARY KEY CLUSTERED
    (
        [ListOrder] ASC
    )WITH (PAD_INDEX = OFF, STATISTICS_NORECOMPUTE = OFF, IGNORE_DUP_KEY = OFF,
    ALLOW_ROW_LOCKS = ON, ALLOW_PAGE_LOCKS = ON) ON [PRIMARY]
) ON [PRIMARY] TEXTIMAGE_ON [PRIMARY]

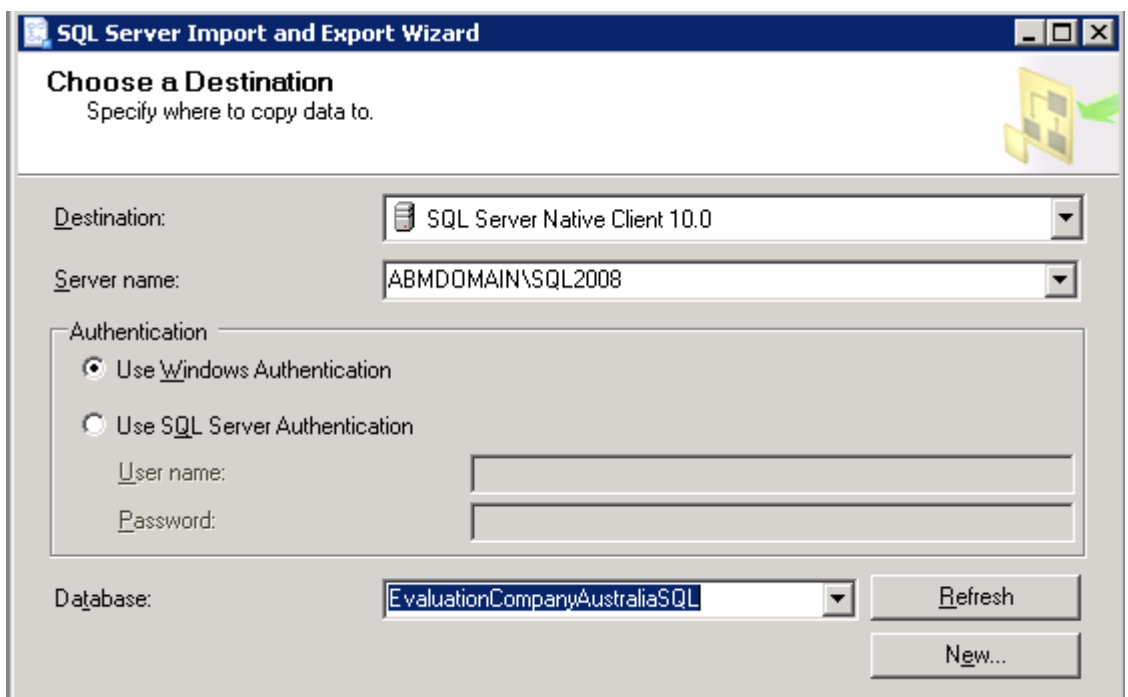
GO

SET ANSI_PADDING OFF
GO
```

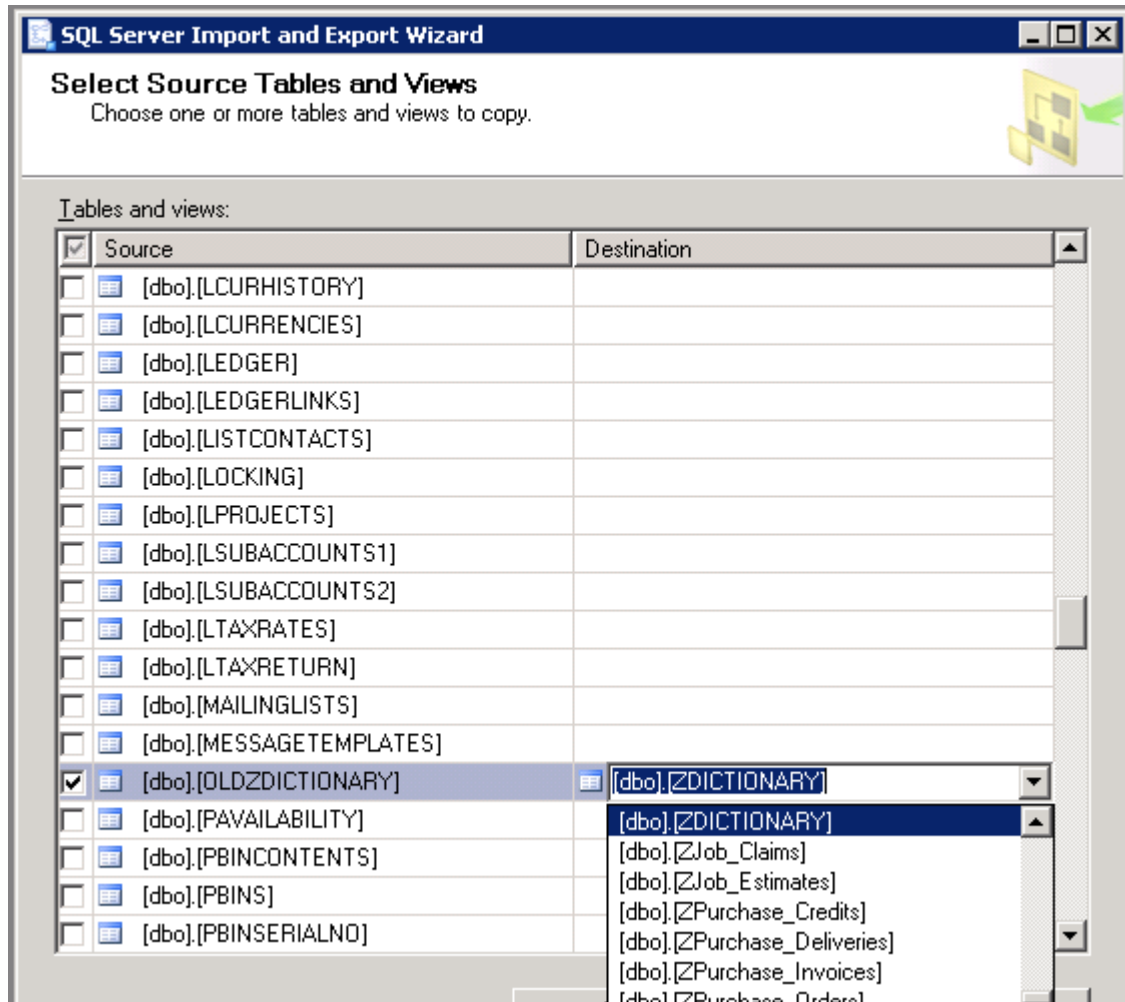
3. You can then use the Import/Export wizard that comes with SQL2008 R2 to import from the OLDZDictionary



The screenshot shows the 'Choose a Data Source' step of the SQL Server Import and Export Wizard. The title bar reads 'SQL Server Import and Export Wizard'. Below the title bar, the text 'Choose a Data Source' is followed by the instruction 'Select the source from which to copy data.' The main area contains several fields: 'Data source:' is set to 'SQL Server Native Client 10.0'; 'Server name:' is set to 'ABMDOMAIN\SQL2008'; 'Authentication' has two radio buttons, 'Use Windows Authentication' (selected) and 'Use SQL Server Authentication'; 'User name:' and 'Password:' are empty text boxes; 'Database:' is set to 'EvaluationCompanyAustraliaSQL'; and a 'Refresh' button is located to the right of the database dropdown.



The screenshot shows the 'Choose a Destination' step of the SQL Server Import and Export Wizard. The title bar reads 'SQL Server Import and Export Wizard'. Below the title bar, the text 'Choose a Destination' is followed by the instruction 'Specify where to copy data to.' The main area contains several fields: 'Destination:' is set to 'SQL Server Native Client 10.0'; 'Server name:' is set to 'ABMDOMAIN\SQL2008'; 'Authentication' has two radio buttons, 'Use Windows Authentication' (selected) and 'Use SQL Server Authentication'; 'User name:' and 'Password:' are empty text boxes; 'Database:' is set to 'EvaluationCompanyAustraliaSQL'; and there are 'Refresh' and 'New...' buttons to the right of the database dropdown.



Note: If the site does not have R2 import/export then you can just copy the contents of OLDZdictionary and paste to ZDictionary. To copy select all the columns by clicking on the grey section to the left and then holding down the shift key and down arrow until all are selected and CTRL+C

ABMDOMAIN\S...ZDICTIONARY							
	TableName	FieldName	ListOrder	FieldType	FieldSize	FullDescription	St
▶	Customers	-	11000	T	0.0000	Customer Custo...	
	Suppliers	-	12000	T	0.0000	Supplier Custom ...	
	Products	-	13000	T	0.0000	Product Custom ...	
	Ledger	-	14000	T	0.0000	Ledger Custom ...	
	LSubAccounts1	-	14100	T	0.0000	Sub Account 1 C...	
	LSubAccounts2	-	14200	T	0.0000	Sub Account 2 C...	
	Jobs	-	15000	T	0.0000	Job Custom Fiel...	
	PRODUCTS	ZMS5SUPPLY	50475	N	5.0000	Supply Analysis ...	Su
	PRODUCTS	ZMSBUDCOST	50480	N	15.2000	Budgeted Cost ...	Bu
	TRANSHEADERS	ZMSTRANTYE	80295	N	5.0000	AMS Transaction...	AM
	TRANSHEADERS	Zcertno	80300	T	20.0000	cert no ...	
*	NULL	NULL	NULL	NULL	NULL	NULL	NL

Just open then Zdictionary and highlight the line with the Null's in it and Paste. Note if you are copying the fields then you will need to remove the Option List field for the Ledger line as this will not paste correctly. You will then need to copy this value in afterwards

\*THIS BULLETIN IS PROVIDED FOR INFORMATIONAL PURPOSES ONLY. The information contained in this document represents the current view of Advanced Business Manager on the issues discussed as of the date of publication. Because Advanced Business Manager must respond to change in market conditions, it should not be interpreted to be a commitment on the part of Advanced Business Manager and Advanced Business Manager cannot guarantee the accuracy of any information presented after the date of publication.

INFORMATION PROVIDED IN THIS DOCUMENT IS PROVIDED 'AS IS' WITHOUT WARRANTY OF ANY KIND, EITHER EXPRESS OR IMPLIED, INCLUDING BUT NOT LIMITED TO THE IMPLIED WARRANTIES OF MERCHANTABILITY, FITNESS FOR A PARTICULAR PURPOSE AND FREEDOM FROM INFRINGEMENT.

The user assumes the entire risk as to the accuracy and the use of this document.