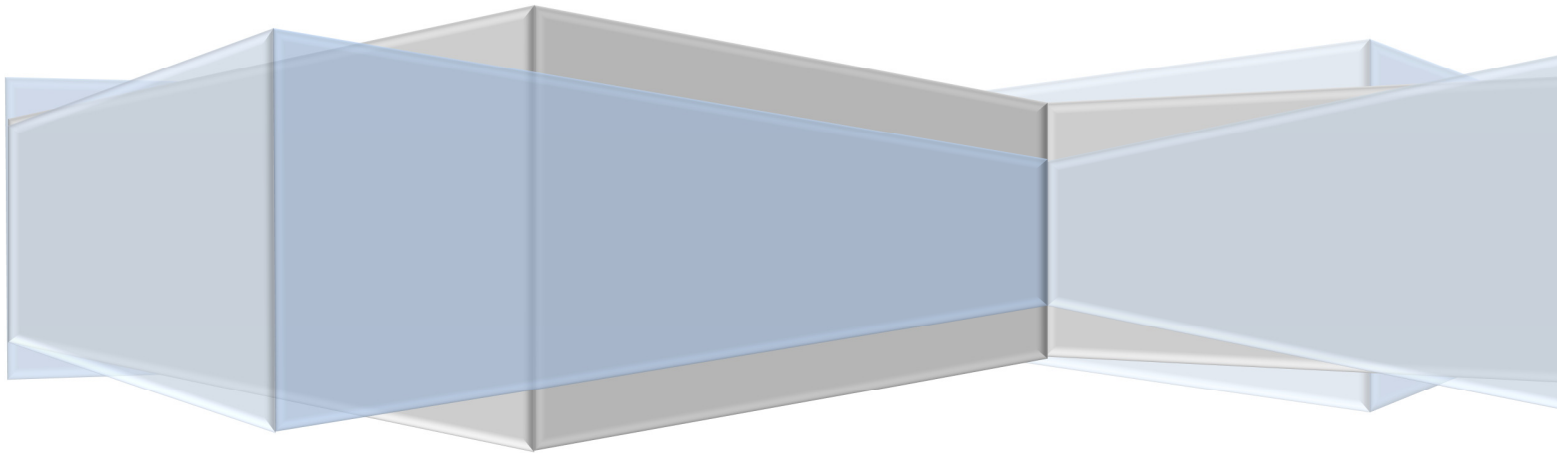




www.advancedbusinessmanager.com

ABM Support Bulletin #113

ABM Warehousing Module Enhancements



Copyright © 2003-2011 Advanced Business Manager Pty Ltd. All rights reserved.

THIS BULLETIN IS PROVIDED FOR INFORMATIONAL PURPOSES ONLY. The information contained in this document represents the current view of Advanced Business Manager on the issues discussed as of the date of publication. Because Advanced Business Manager must respond to change in market conditions, it should not be interpreted to be a commitment on the part of Advanced Business Manager and Advanced Business Manager cannot guarantee the accuracy of any information presented after the date of publication.

INFORMATION PROVIDED IN THIS DOCUMENT IS PROVIDED 'AS IS' WITHOUT WARRANTY OF ANY KIND, EITHER EXPRESS OR IMPLIED, INCLUDING BUT NOT LIMITED TO THE IMPLIED WARRANTIES OF MERCHANTABILITY, FITNESS FOR A PARTICULAR PURPOSE AND FREEDOM FROM INFRINGEMENT.

The user assumes the entire risk as to the accuracy and the use of this document.

Table of Contents

Introduction	1
Transfers	1
View all Product Bins	2
Stocktake	2

INTRODUCTION

Three major changes were introduced with the release of two new programs for ABM 2010 SP3A that relate to the Warehousing Module.

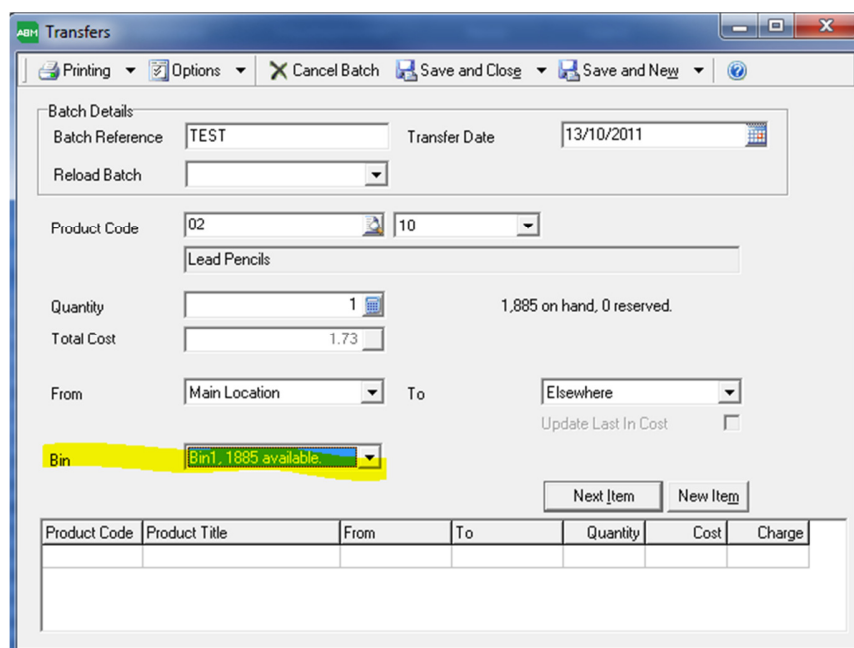
ABMTransfers.exe 6.2.0.14
ABMWarehousing.exe 6.2.0.17

These changes include:

- Transfers to Warehouse bins via the ABM Transfer facility
- The ability to view all other locations and bin information for a particular product when the product is highlighted in the Warehousing Module
- The ability to stocktake the product from the Warehousing Module

TRANSFERS

Bin locations can now be selected when doing a product transfer. A new dropdown is available from the standard ABM Transfer screen.

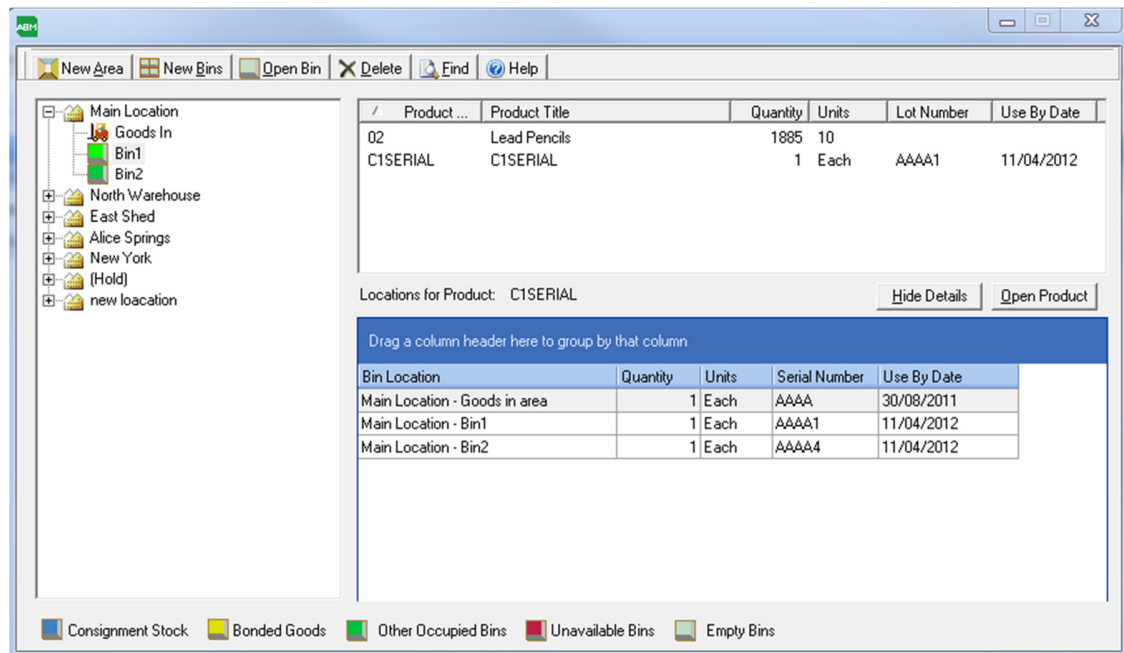


The screenshot shows the 'ABM Transfers' window. It has a menu bar with 'Printing', 'Options', 'Cancel Batch', 'Save and Close', 'Save and New', and a help icon. The main form is divided into sections:

- Batch Details:** Batch Reference (TEST), Transfer Date (13/10/2011), and Reload Batch (dropdown).
- Product Code:** 02, 10 (dropdown), and Lead Pencils (text field).
- Quantity:** 1 (text field), 1,885 on hand, 0 reserved.
- Total Cost:** 1.73 (text field).
- From:** Main Location (dropdown), **To:** Elsewhere (dropdown).
- Bin:** Bin1, 1885 available (dropdown, highlighted in yellow).
- Buttons:** Next Item, New Item.
- Table:** A table with columns: Product Code, Product Title, From, To, Quantity, Cost, Charge.

VIEW ALL PRODUCT BINS

The Warehouse View module has a new section in the bottom right hand corner that allows the user to see all of the other locations and bins when you highlight the product in the top part of the window. You can turn off this view by clicking on the Hide/Show Details buttons. There is also a quick link button to view the product details. The product list load time in the Goods In area has also been improved.



STOCKTAKE

The standard stocktake facility does not interface with the Warehousing Module. To help correct inaccuracies the facility to correct quantities from Bins / Area / Goods In locations has been added to the Warehouse Module.

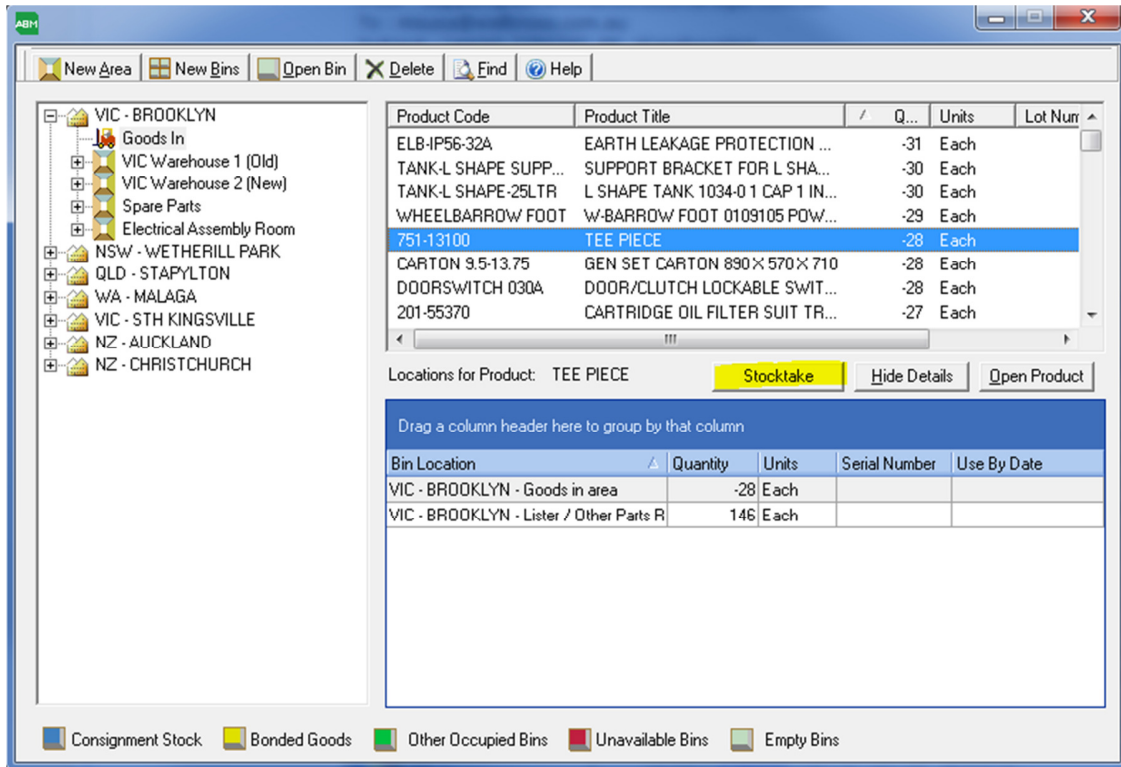
Features:

- The warehouse stocktake is only for a location, you cannot transfer between locations using the stocktake. You must transfer first prior to stocktaking an item.
- Alter quantities in existing Bin / Area / Goods In locations
- Add new serial number and lot numbered items to Bin / Area / Goods In locations
- Remove existing serial number and lot numbered items to Bin / Area / Goods In locations

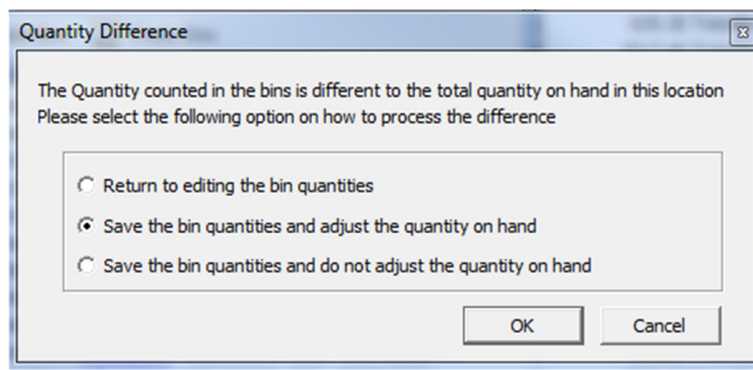
To access the stock take facility highlight the product and click on the Stocktake button while in the Show Details view.

ABM

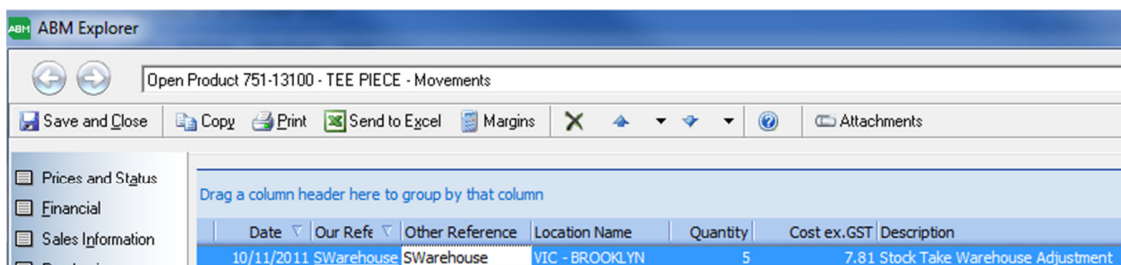
SUPPORT BULLETIN #113



Once you have altered the quantities and end the stocktake ABM will check the quantity on hand for the location and if it doesn't match will offer three options.

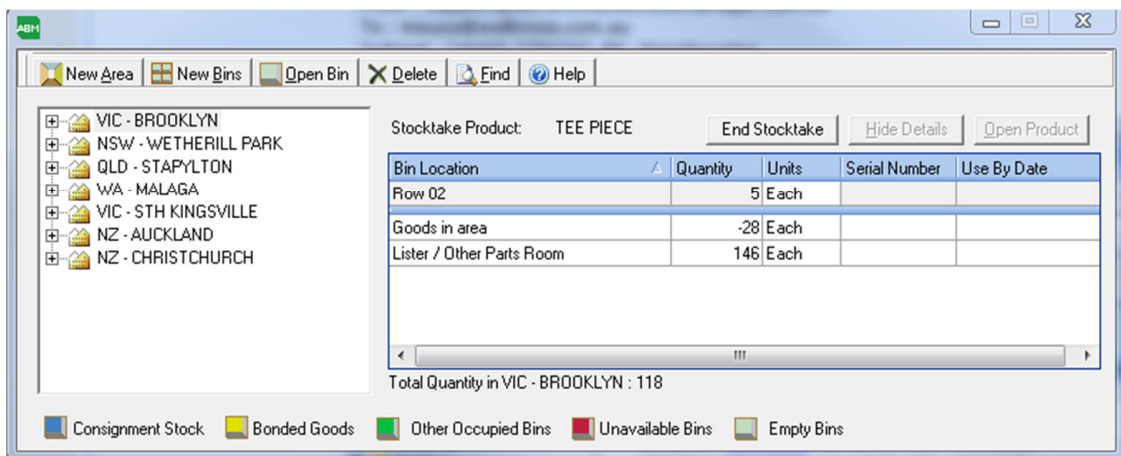
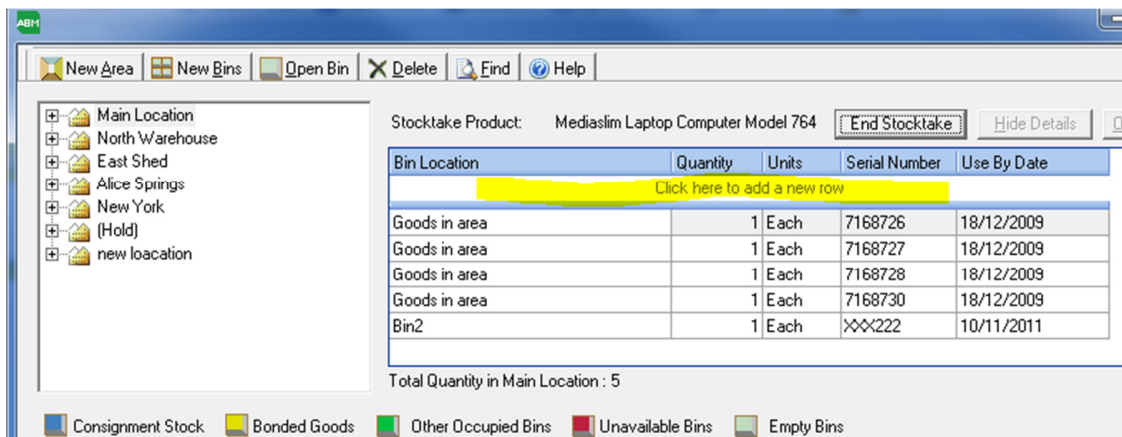


If you choose to adjust the quantities ABM will post a stock adjustment to the product and alter the location quantity accordingly. Note that the same batch will continue to be updated with the stocktake postings until the Warehousing application is closed.



QUANTITY UPDATES WITH IN A SINGLE LOCATION

1. Select the location you want to alter and change the quantity.
2. If there isn't a location listed you can create it by adding a new row and selection the location, quantity, and unit of measure.
3. To add a new row just click in the white area between the blue header and the blue line below.



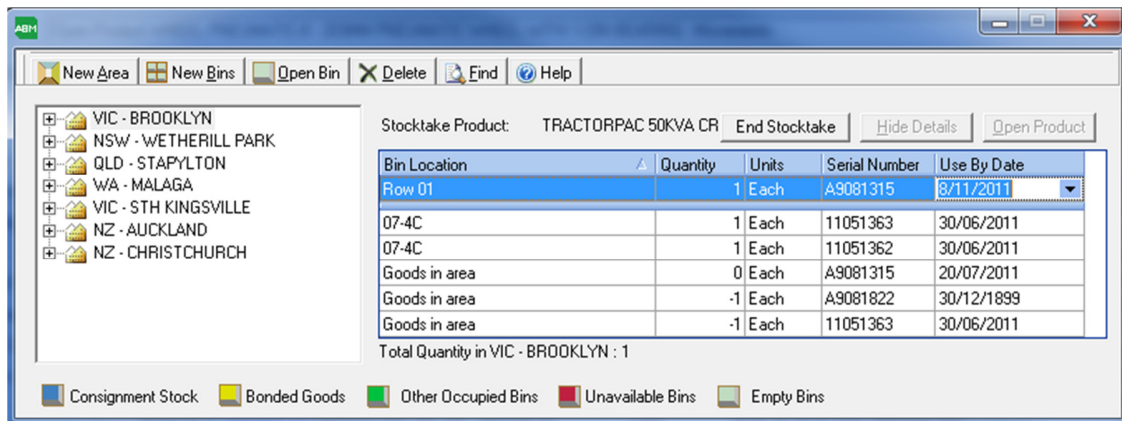
SERIAL LOT NUMBER ALTERATIONS WITH IN A SINGLE LOCATION

1. 0 the item in the first location
2. Re-enter the serial numbered item in the second location by adding a new row to the table

In the example below I have removed serial number A9081315 from the Goods in area and added it back into another NZ Bin.

ABM

SUPPORT BULLETIN #113



SERIAL LOT NUMBER ALTERATIONS FROM ONE LOCATION TO ANOTHER

1. Move the serial numbered item to the correct location first by dragging it in the Warehousing Module or using the Transfer facility.
2. The use the stocktake to correct if needed

SERIAL NUMBERS WITH QUANTITIES LESS THAN 0

When stocking serialized or lot numbered items if there is a negative quantity the Warehouse module will produce a warning message.

