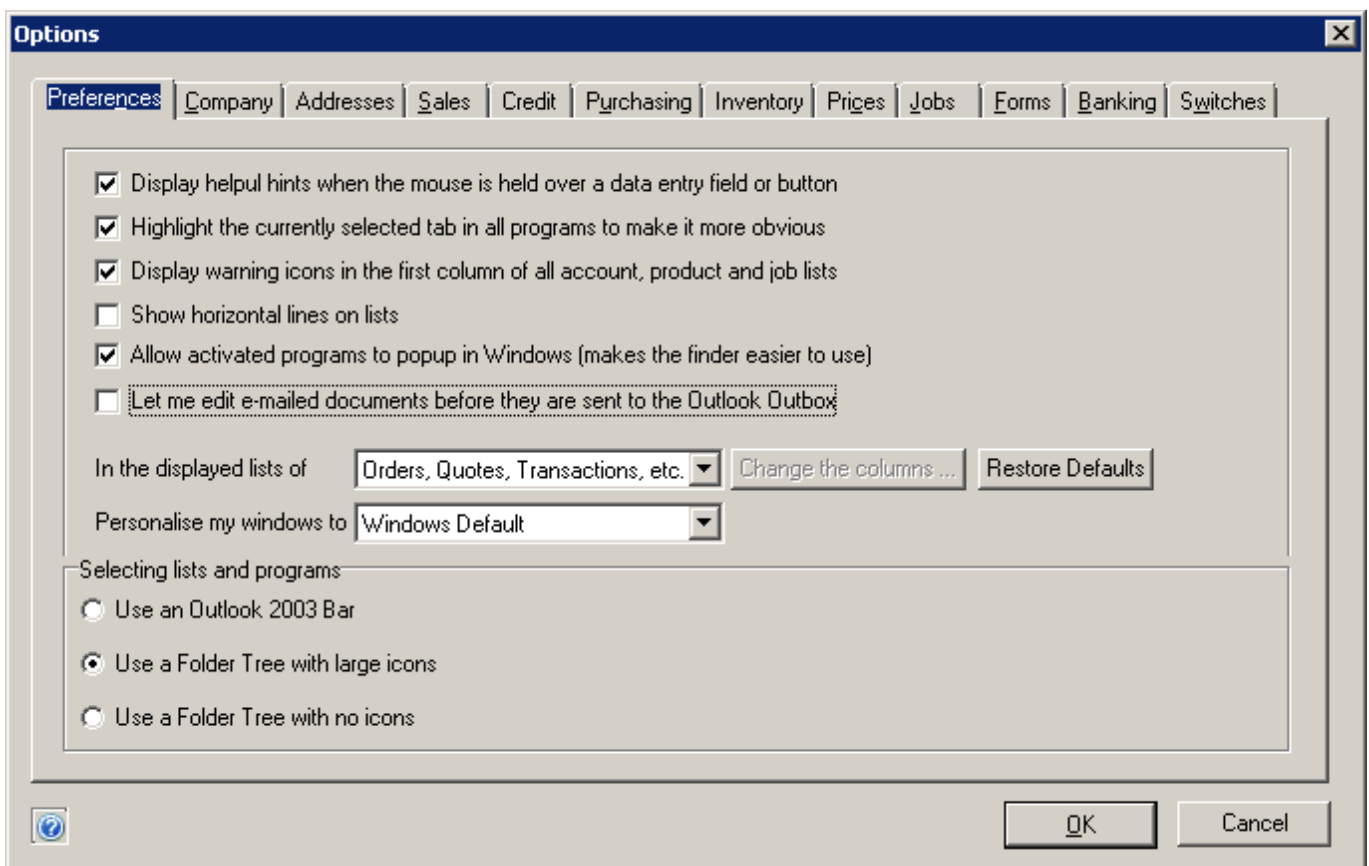


Support Bulletin # 115 ABM and SMTP Email

ABM 7 has introduced the ability to handle SMTP email.

DocServer is not required to use the SMTP server option, however if an email is displayed to the user before sending then it will not use the SMTP option and will continue to use Outlook (Tools -> Options -> Preferences -> Let me edit documents before they are sent to the Outlook Out box). They would therefore need to turn off the option in the ABM company settings to preview emails before they are sent if SMTP is to work.



SMTP setting can be set up in:

Customers -> Reports -> Report Tools -> Set Fax and Email Server

Under email Tick Use SMTP Server radio button

Send Test email will allow you to determine if configured correctly

Select Fax and E-Mail Server

Select the method that you wish to use to send faxes and e-mails from ABM. These settings will apply only to your user login, but will be applied for all workstations that you log in on.

Fax

- Use default Crystal fax sending using MAPI via MS Outlook and MS Exchange
- Use Microsoft Fax Service with the following settings

Server Name

E-Mail

- Use Microsoft Outlook
- Use SMTP Server

Server Name Port 

Username

Password

From address

Reply-To address

Bcc address