

Support Bulletin # 24 (Revised) How to back up a SQL database with SQL Utility

Introduction:

SQL Server is not only a database engine but a database service that provides tools and utilities the SQL Server environment. The service's main responsibilities include:

- Reliable storage for data
- A means of rapid and consistent access to the data
- Security to the data
- Enforcement of data-integrity rules
- Backup and restore facilities

To administer these services SQL Server maintains a connection to each database which results in a kind of lock on the database. While the database is attached to the Server this lock prevents simple file copying through Windows Explorer and you should use the restore and backup tools accessed via Enterprise Manager or SQL Server Tools to perform these types of functions.

There are third parties utilities for managing MSDE SQL databases and we highly recommend purchasing one of these if you are going to administer and support SQL Server applications.

The following examples show how to use the ABM custom interface, SQL Server Tools that is installed with ABM.

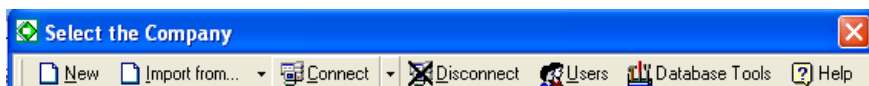
ABM SQL Utility:

To be able to access or connect to a SQL database in ABM the database must be attached to the SQL server. The ABM SQL utility application is installed with ABM and is used to backup, restore, attach, detach and set security settings for the MSDE SQL Server. ABM has a direct link to the utility called "Database Tools" that can be accessed via the ABM company list window.

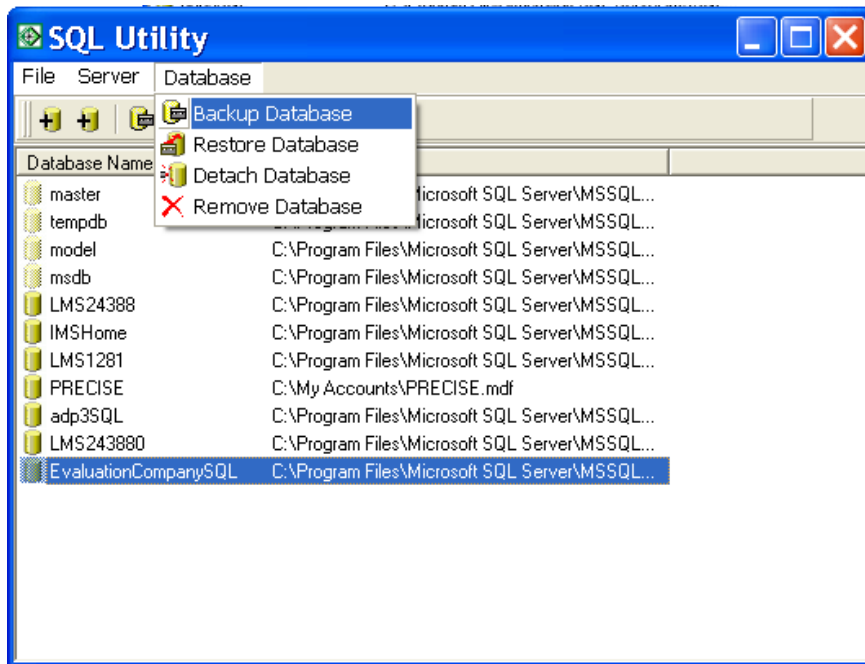
Backing up a database with ABM SQL Utility:

To backup a database in the SQL Utility:

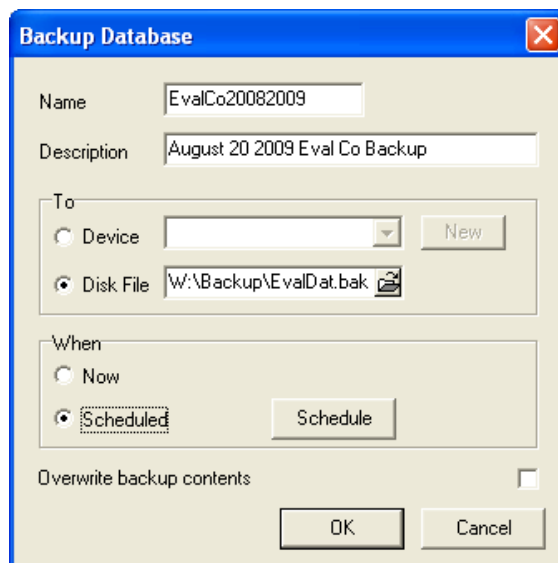
1. From the ABM Company list window select the DATABASE TOOLS button across the top bar to run the SQL Utility.



2. Logon to the SQL Server
3. Highlight the database you want to backup and from the SQL utility menu select "Backup Database"



4. Enter the following details into the Backup Database window:
 - **Name.** This is the name that will be applied to the backup. The name is usually used as a shorter description of the backup.
 - **Description.** More text detail about the backup can be recorded here.
 - **Backup Device .** Each backup must have a valid back-up device specified for it. A backup device can be a physical file on a storage volume or drive including tape drives.



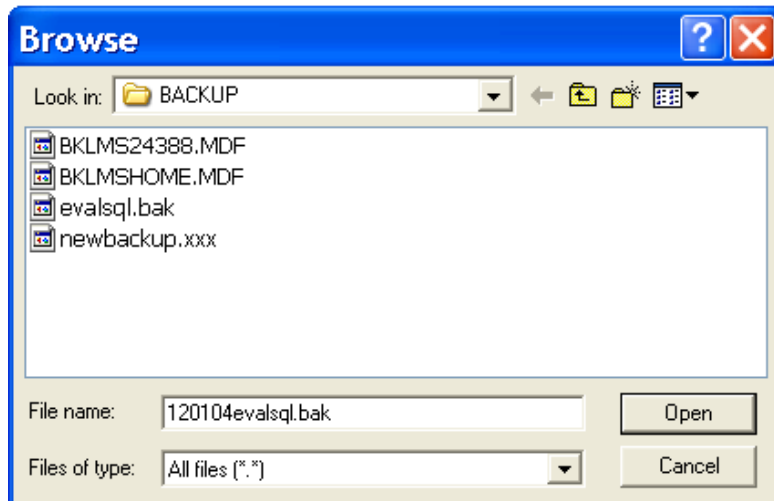
Advanced Business Manager Pty Ltd



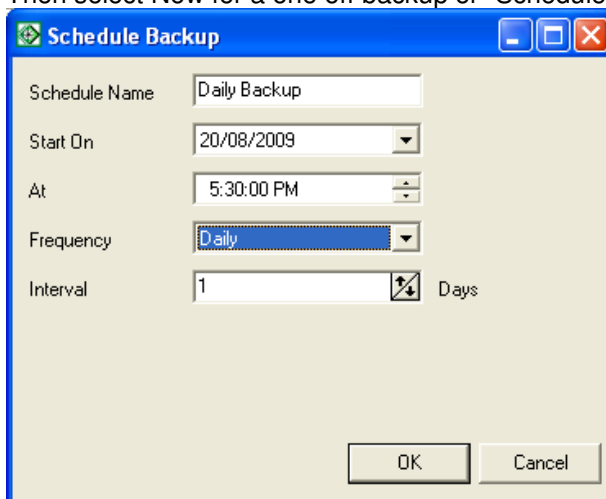
Suite 2/599 Doncaster Road
Doncaster, VIC 3108
ACN 073 061 677

Email: abmsupport@advancedbusinessmanager.com.au
Tel: (03) 9532 4199 Fax: (03) 9840 1799
Website: www.advancedbusinessmanager.com.au

5. Select the device or browse for the backup location, enter the name, and click open to select the database backup location. The file extension can be blank or any 3 character value.



6. Then select Now for a one off backup or "Scheduled" if this is to be a regular backup



7. Change the scheduled settings and click OK
8. Select 'ok' from Backup Database window to complete the backup process.
9. The "Disk File" entry for a network drive must be entered as the UNC (universal naming convention) name, not the mapped drive. Example: [\\servername\drive\path](#) not w:\drive\path.

*THIS BULLETIN IS PROVIDED FOR INFORMATIONAL PURPOSES ONLY. The information contained in this document represents the current view of Advanced Business Manager on the issues discussed as of the date of publication. Because Advanced Business Manager must respond to change in market conditions, it should not be interpreted to be a commitment on the part of Advanced Business Manager and Advanced Business Manager cannot guarantee the accuracy of any information presented after the date of publication.

INFORMATION PROVIDED IN THIS DOCUMENT IS PROVIDED 'AS IS' WITHOUT WARRANTY OF ANY KIND, EITHER EXPRESS OR IMPLIED, INCLUDING BUT NOT LIMITED TO THE IMPLIED WARRANTIES OF MERCHANTABILITY, FITNESS FOR A PARTICULAR PURPOSE AND FREEDOM FROM INFRINGEMENT.

The user assumes the entire risk as to the accuracy and the use of this document.