

Advanced Business Manager Pty Ltd



Suite 2/599 Doncaster Road
Doncaster, VIC 3108
ACN 073 061 677

Email: abmsupport@advancedbusinessmanager.com.au
Tel: (03) 9532 4199 Fax: (03) 9840 1799
Website: www.advancedbusinessmanager.com.au

Support Bulletin #58 Importing BOMs into the Manufacturing System

Table of Contents

Introduction	2
Rules and Tips and Reminders	2
Rules:	2
Tips:	2
Reminders:	2
Import file Structure	2
Bill Code	2
Component Type	2
Component Code	3
Component Description	3
Unit Of Measure	3
Variation Qty	3
Variation Waste	3
Notes	3
Example of CSV input file	4
Importing the CSV file into the Manufacturing System	5
Troubleshooting	6
1. Exception EOpenError on import:	6
2. Error retrieving bom message:	6
MS Global Edit Component Utility	7

Advanced Business Manager Pty Ltd



Suite 2/599 Doncaster Road
Doncaster, VIC 3108
ACN 073 061 677

Email: abmsupport@advancedbusinessmanager.com.au
Tel: (03) 9532 4199 Fax: (03) 9840 1799
Website: www.advancedbusinessmanager.com.au

Introduction

The Manufacturing system allows for the import of Bill of Material (BOM) via the Utilities\Import Bills menu. This document outlines the technique used to import a simple CSV (Comma Separated Values) import file. The import file can be derived from any system that will export BOM records such as Business Manager 2004. The import file can also be constructed in excel or other application that will export in CSV format.

Rules and Tips and Reminders

Rules:

1. Every product to be imported and used in BOM must exist in the stock file in ABM.
2. Units of measure for all products must match the stock file in ABM.
3. No headers records are allowed in the import file.
4. If you import a component type other than inventory (component type = 0) it must match an existing AMS group for the appropriate component type.
5. No commas are allowed in any of the field values.

Tips:

- In BM and many systems and costing spreadsheets Labour is classed as a non-decrementing stock item. It is easier to import them this way (see rule number 4) and then use the Global Edit Component utility in MS to change Labour to the MS Labour component type.
- Leave the Component Description blank, the import program will fill in the description from the ABM product master table.

Reminders:

- A Bill must be active before it can be used in a Production Run.

Import file Structure

The fields to be imported are Bill Code, Component Type, Component Code, Component Description, Unit Of Measure, Variation Qty, Variation Waste, Notes.

Bill Code – Finished product code matching the ABM stock file. This includes sub-assemblies.

Component Type – Relates to the MS component types.

0	Inventory
1	Overhead
2	Labour
3	Resource
4	Alternate
5	Milestone
6	Outwork

Advanced Business Manager Pty Ltd



Suite 2/599 Doncaster Road
Doncaster, VIC 3108
ACN 073 061 677

Email: abmsupport@advancedbusinessmanager.com.au
Tel: (03) 9532 4199 Fax: (03) 9840 1799
Website: www.advancedbusinessmanager.com.au

7 Phantom

Component Code – Product code of component for BOM.

Component Description - Always leave blank as the import will populate from ABM product master table.

Unit Of Measure – Unit of measure the product has in ABM, i.e. Each. Must match ABM.

Variation Qty – Relates to Per Unit value in MS component setup. Fig. 1

Variation Waste – Wastage value as quantity in MS component setup. Fig. 1

Notes - Notes in MS Component setup. One line only. Fig. 1

Item Code	Item Name	Per Unit	Unit
-----------	-----------	----------	------

figure 1.

Advanced Business Manager Pty Ltd



Suite 2/599 Doncaster Road
Doncaster, VIC 3108
ACN 073 061 677

Email: abmsupport@advancedbusinessmanager.com.au
Tel: (03) 9532 4199 Fax: (03) 9840 1799
Website: www.advancedbusinessmanager.com.au

Example of CSV input file

Product Code	Comp Type	Comp Product Code	Description (blank)	UoM	V. Qty	V. waste	Notes
18500	0	14950		Each	1	0	
18500	0	14900		Each	1	0	
18500	0	LABOUR		Each	1	0	non decrementing
FAWEX6800	0	4405		Each	1	0	warranty valid 2010
FAWEX6800	0	16900		Each	1	0	
FAWEX6800	0	17000		Each	2	0	
FAWEX6800	0	20000		Each	1	0	
FAWEX6800	0	18500		Each	1	0	
FAWEX6800	0	64100		Each	1	0	
FAWEX6800	0	LABOUR		Each	1	0	non decrementing
FAWE6400	0	4405		Each	1	0	warranty valid 2010
FAWE6400	0	14400		Each	4	0	USB ver 2
FAWE6400	0	16900		Each	1	0	
FAWE6400	0	64100		Each	1	0	
FAWE6400	0	LABOUR		Each	1	0	non decrementing
FAWE6700	0	4405		Each	1	0	warranty valid 2010
FAWE6700	0	14400		Each	4	0	USB ver 2
FAWE6700	0	16900		Each	1	0	
FAWE6700	0	LABOUR		Each	1	0	non decrementing
FAWM24	0	4405		Each	1	0	warranty valid 2008
FAWM24	0	18500		Each	1	0	
FAWM24	0	LABOUR		Each	1	0	non decrementing
FAWM18	0	4405		Each	1	0	warranty valid 2008
FAWM18	0	18000		Each	1	0	
FAWM18	0	LABOUR		Each	1	0	non decrementing

Importing the CSV file into the Manufacturing System

1. From the top menu in MS select Utilities\Import BOM. Select the *Simple CSV Import* from the Import Method drop down list (figure 2). You can choose to *Select all available bills* or *Select bills to import*. Fig. 2

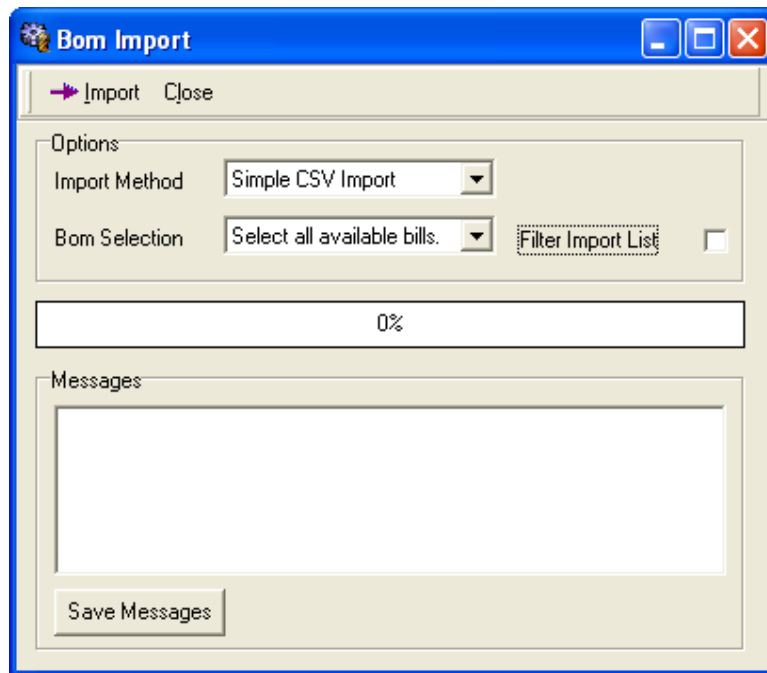


figure 2

2. Select bills to import will bring up an additional window to choose the bills. Fig. 3

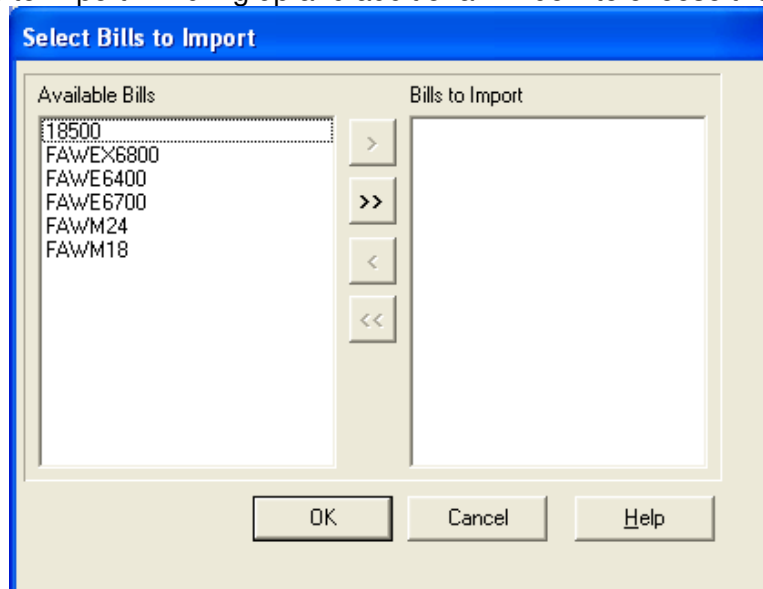


figure 3.

3. Click Import and select the CSV file from the file browser window to start importing.

4. Exception messages will show in the messages area and can be saved. Fig. 4

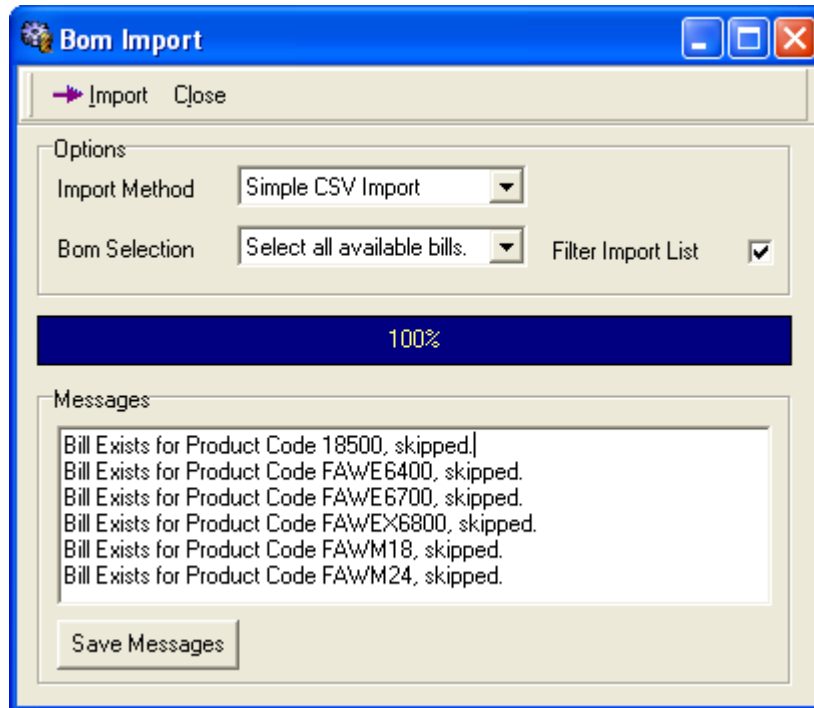
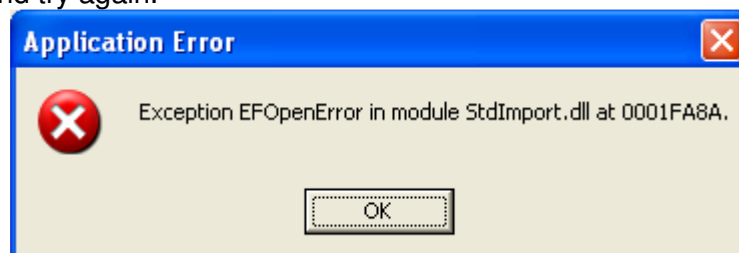


figure 4

Troubleshooting

1. Exception *EOpenError* on import:

This error indicates that the CSV file you are trying to import is open and can't be read. Close the file and try again.



2. Error retrieving bom message:

This error may indicate that the default Bom that the Manufacturing System created does not exist or no bom exists in the system. Click ok to continue importing the bills.

Advanced Business Manager Pty Ltd



Suite 2/599 Doncaster Road
Doncaster, VIC 3108
ACN 073 061 677

Email: abmsupport@advancedbusinessmanager.com.au
Tel: (03) 9532 4199 Fax: (03) 9840 1799
Website: www.advancedbusinessmanager.com.au



MS Global Edit Component Utility

In MS you can globally alter component information with the Utility\Change BOM Components. This could be helpful if you imported all your components as component type Inventory and wanted to globally change the imported labour components to a more appropriate MS labour/skill type.

1. From the utilities menu dropdown select Change BOM Components.
2. Select the bills you want to alter or select all bills.
3. Set the criteria to alter, add, replace with, or remove. Fig 5

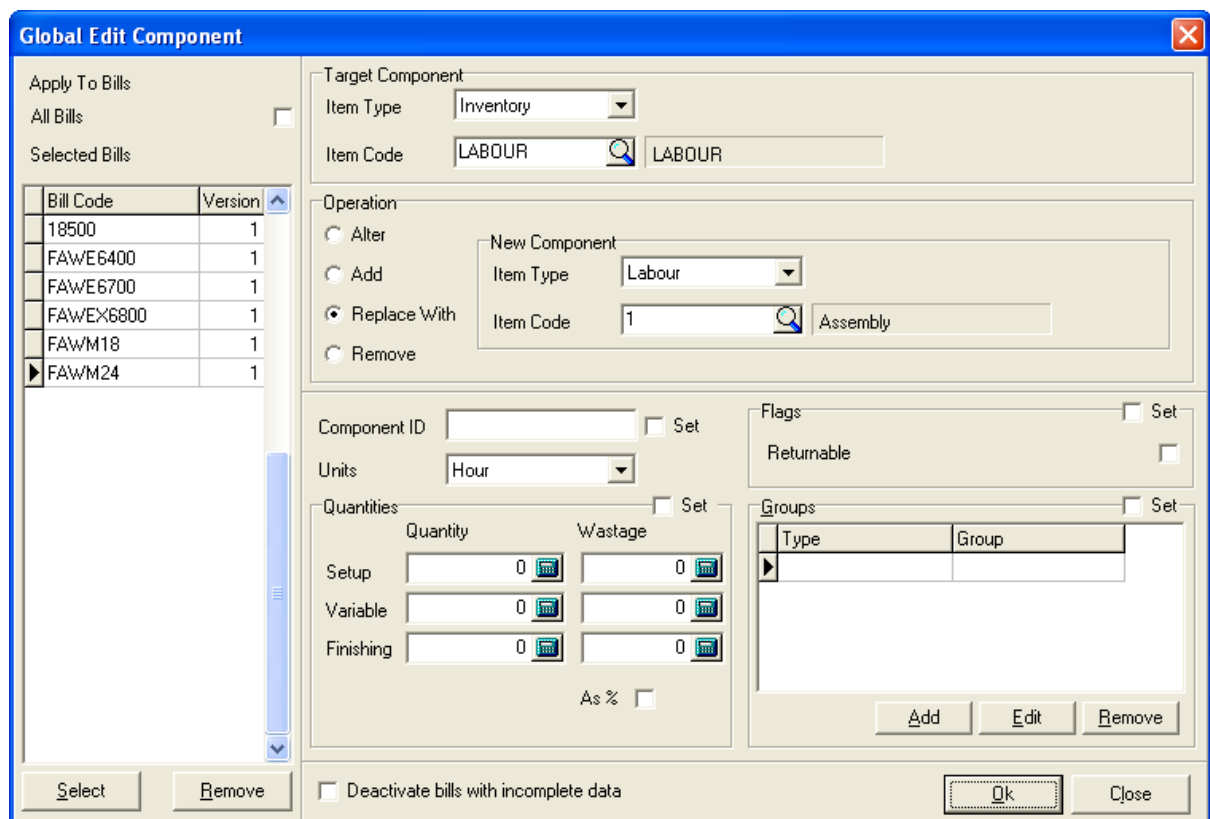


figure 5

The example above shows how to change all occurrences of product code LABOUR from MS component type Inventory to MS component type Labour/Skill.

Advanced Business Manager Pty Ltd



Suite 2/599 Doncaster Road
Doncaster, VIC 3108
ACN 073 061 677

Email: abmsupport@advancedbusinessmanager.com.au
Tel: (03) 9532 4199 Fax: (03) 9840 1799
Website: www.advancedbusinessmanager.com.au

*THIS BULLETIN IS PROVIDED FOR INFORMATIONAL PURPOSES ONLY. The information contained in this document represents the current view of Business Manager Software on the issues discussed as of the date of publication. Because Business Manager Software must respond to change in market conditions, it should not be interpreted to be a commitment on the part of Business Manager Software and Business Manager Software cannot guarantee the accuracy of any information presented after the date of publication.

INFORMATION PROVIDED IN THIS DOCUMENT IS PROVIDED 'AS IS' WITHOUT WARRANTY OF ANY KIND, EITHER EXPRESS OR IMPLIED, INCLUDING BUT NOT LIMITED TO THE IMPLIED WARRANTIES OF MERCHANTABILITY, FITNESS FOR A PARTICULAR PURPOSE AND FREEDOM FROM INFRINGEMENT.

The user assumes the entire risk as to the accuracy and the use of this document.