

# Advanced Business Manager Pty Ltd



Suite 2/599 Doncaster Road  
Doncaster, VIC 3108  
ACN 073 061 677

Email: [abmsupport@advancedbusinessmanager.com.au](mailto:abmsupport@advancedbusinessmanager.com.au)  
Tel: (03) 9532 4199 Fax: (03) 9840 1799  
Website: [www.advancedbusinessmanager.com.au](http://www.advancedbusinessmanager.com.au)

## Support Bulletin # 64 ABM Out of Balance Batch Utilities

### Table of Contents

The ABM Utility .....	1
ABM Utility Setup.....	1
Fix Out Of Balance Batches .....	2
Re-Calculate Automatic Postings.....	3

### The ABM Utility

Due to a number of issues in ver 3.05 relating to out of balance batches a utility was developed to help resolve the effect of the problem.

Under Ledger reports in ABM there are two reports that will show information relating to out of balance batches: Out of Balance Detailed and Out of Balance Summary. Note that one sided journals will also show up on these reports as they are out of balance.

ABMUtility is a program that has two options on the dropdown related to out of balance batches.

#### ***ABM Utility Setup***

Copy the ABMUtility.exe into the c:\program files\advanced business manager on the workstation you are going to run it on.

The reason we don't advise you to add it to the x:\Accounts\Programs directory is so that the only workstation that has the utility and can run it is the one you are working on. You don't want this utility to be enabled for the customer to run on site. This utility is for support purposes only.

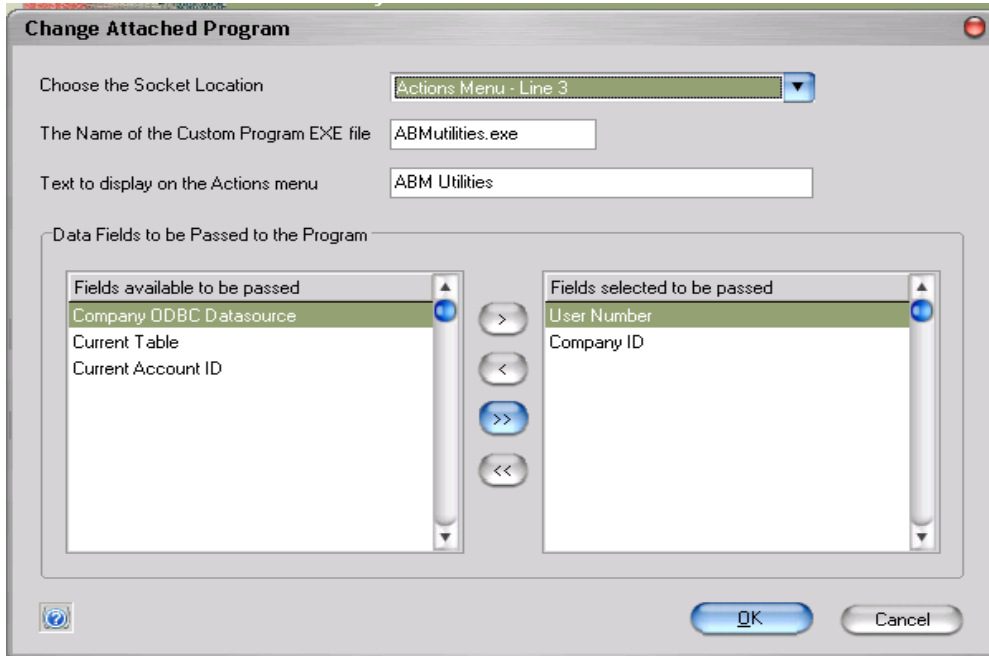
Go into ABM and add it to the Actions Menu via Tools\Customize\Sockets as a socket. You need to pass the user number and company id fields. See screen shot below.

# Advanced Business Manager Pty Ltd

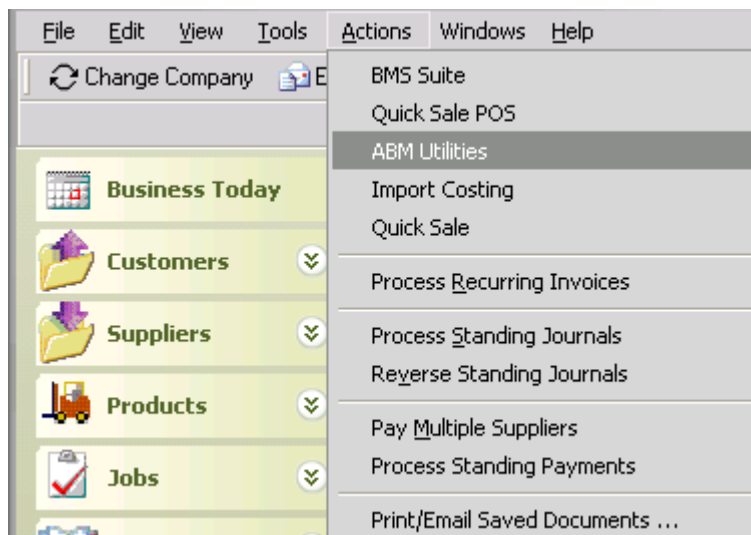


Suite 2/599 Doncaster Road  
Doncaster, VIC 3108  
ACN 073 061 677

Email: [abmsupport@advancedbusinessmanager.com.au](mailto:abmsupport@advancedbusinessmanager.com.au)  
Tel: (03) 9532 4199 Fax: (03) 9840 1799  
Website: [www.advancedbusinessmanager.com.au](http://www.advancedbusinessmanager.com.au)



After the utility is added to the sockets it can be selected from the Actions Menu drop down list. To run it just select it from the list.



## Fix Out Of Balance Batches

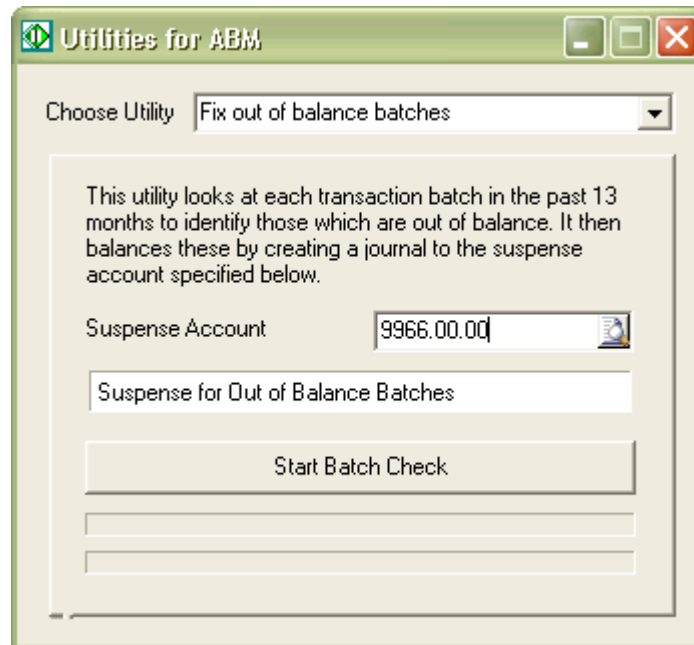
The 2nd to last option in the dropdown list of the Utility is *Fix out of balance batches*, This will create a posting to a nominated suspense account that will bring each out of balance batch into balance. A separate posting to the suspense account is created for each out of balance batch. You can then decide what to do with the value in the suspense account. I recommend creating a new suspense account for this purpose.

# Advanced Business Manager Pty Ltd



Suite 2/599 Doncaster Road  
Doncaster, VIC 3108  
ACN 073 061 677

Email: [abmsupport@advancedbusinessmanager.com.au](mailto:abmsupport@advancedbusinessmanager.com.au)  
Tel: (03) 9532 4199 Fax: (03) 9840 1799  
Website: [www.advancedbusinessmanager.com.au](http://www.advancedbusinessmanager.com.au)



Select the suspense account and Click *Start Batch Check* to start the fix program. When the program is finished a message will appear indicating the Batch check is complete.



You can then view the transactions that were created by viewing the Transaction History tab in the GL suspense account you nominated. The Reference field shows the relating transaction and the Deposit No. field shows the batch the transaction was created for.

# Advanced Business Manager Pty Ltd



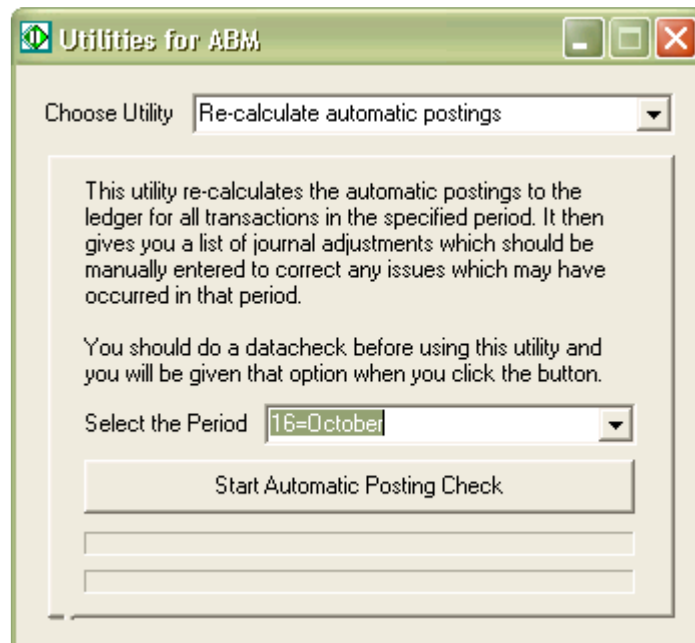
Suite 2/599 Doncaster Road  
 Doncaster, VIC 3108  
 ACN 073 061 677

Email: abmsupport@advancedbusinessmanager.com.au  
 Tel: (03) 9532 4199 Fax: (03) 9840 1799  
 Website: www.advancedbusinessmanager.com.au

Date	Refere...	Batch	Deposit No.	Type	Description	Total ex...
28/07/2007	PD000066	766	Batch 766	Journal	Purchase Batch out of balance	0.20
28/07/2007	PD000067	767	Batch 767	Journal	Purchase Batch out of balance	0.19
31/07/2007	PD000086	906	Batch 906	Journal	Purchase Batch out of balance	0.01
06/08/2007	PD000108	1101	Batch 1101	Journal	Purchase Batch out of balance	0.01
10/08/2007	PD000128	1229	Batch 1229	Journal	Purchase Batch out of balance	5.90
10/08/2007	PD000132	1236	Batch 1236	Journal	Purchase Batch out of balance	-0.06
16/08/2007	PD000161	1407	Batch 1407	Journal	Stocktake Batch out of balan...	2177.71
16/08/2007	PD000167	1418	Batch 1418	Journal	Purchase Batch out of balance	-987.48
16/08/2007	PD000168	1419	Batch 1419	Journal	Purchase Batch out of balance	-387.12
22/08/2007	PD000175	1577	Batch 1577	Journal	Stocktake Batch out of balan...	-1923.62
29/08/2007	PD000194	1919	Batch 1919	Journal	Purchase Batch out of balance	1926.89

## Re-Calculate Automatic Postings

The last option is still in beta, but it might be worth having a look. This utility, Re-Calculate Automatic Postings, will create an MS Excel spread sheet with the values of all of the control accounts for a given period. It uses the current Control account links to determine which GL accounts to accumulate. This is especially helpful for the Delivered not invoiced account which is almost impossible to reconcile.



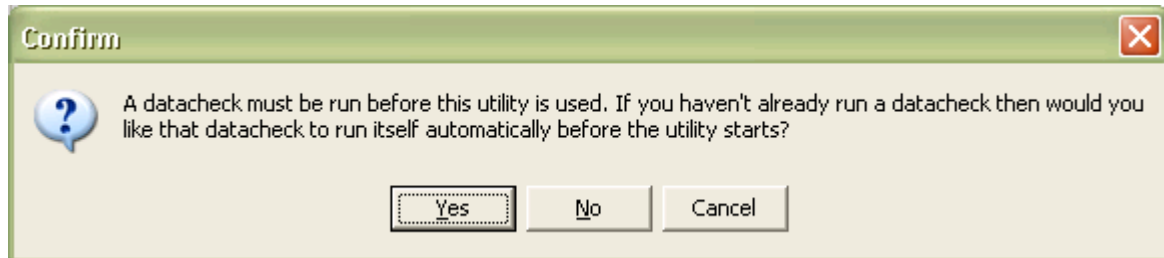
Select the suspense account and Click *Start Automatic Posting Check* to start the program. The program will prompt you to run a datacheck prior to running the utility. You do have the option to bypass it, but you must run it at least once just prior to running the utility. When the program is finished it will initiate MS Excel and report the numbers for each of the control accounts.

# Advanced Business Manager Pty Ltd



Suite 2/599 Doncaster Road  
Doncaster, VIC 3108  
ACN 073 061 677

Email: [abmsupport@advancedbusinessmanager.com.au](mailto:abmsupport@advancedbusinessmanager.com.au)  
Tel: (03) 9532 4199 Fax: (03) 9840 1799  
Website: [www.advancedbusinessmanager.com.au](http://www.advancedbusinessmanager.com.au)



\*THIS BULLETIN IS PROVIDED FOR INFORMATIONAL PURPOSES ONLY. The information contained in this document represents the current view of Advanced Business Manager on the issues discussed as of the date of publication. Because Advanced Business Manager must respond to change in market conditions, it should not be interpreted to be a commitment on the part of Advanced Business Manager and Advanced Business Manager cannot guarantee the accuracy of any information presented after the date of publication.  
INFORMATION PROVIDED IN THIS DOCUMENT IS PROVIDED 'AS IS' WITHOUT WARRANTY OF ANY KIND, EITHER EXPRESS OR IMPLIED, INCLUDING BUT NOT LIMITED TO THE IMPLIED WARRANTIES OF MERCHANTABILITY, FITNESS FOR A PARTICULAR PURPOSE AND FREEDOM FROM INFRINGEMENT.  
The user assumes the entire risk as to the accuracy and the use of this document.