

Support Bulletin # 76 ABM Reports Flexible Formulas

Executing a report using Flexible Formulas

The Flexible Formulas filter is able to set the value of any formulas in a report, allowing reports to be filter by fields not available in other standard filters.

To add the filter to a report, add a report to ABM, click Set Selection, then add Flexible Formulas to filters used for report.

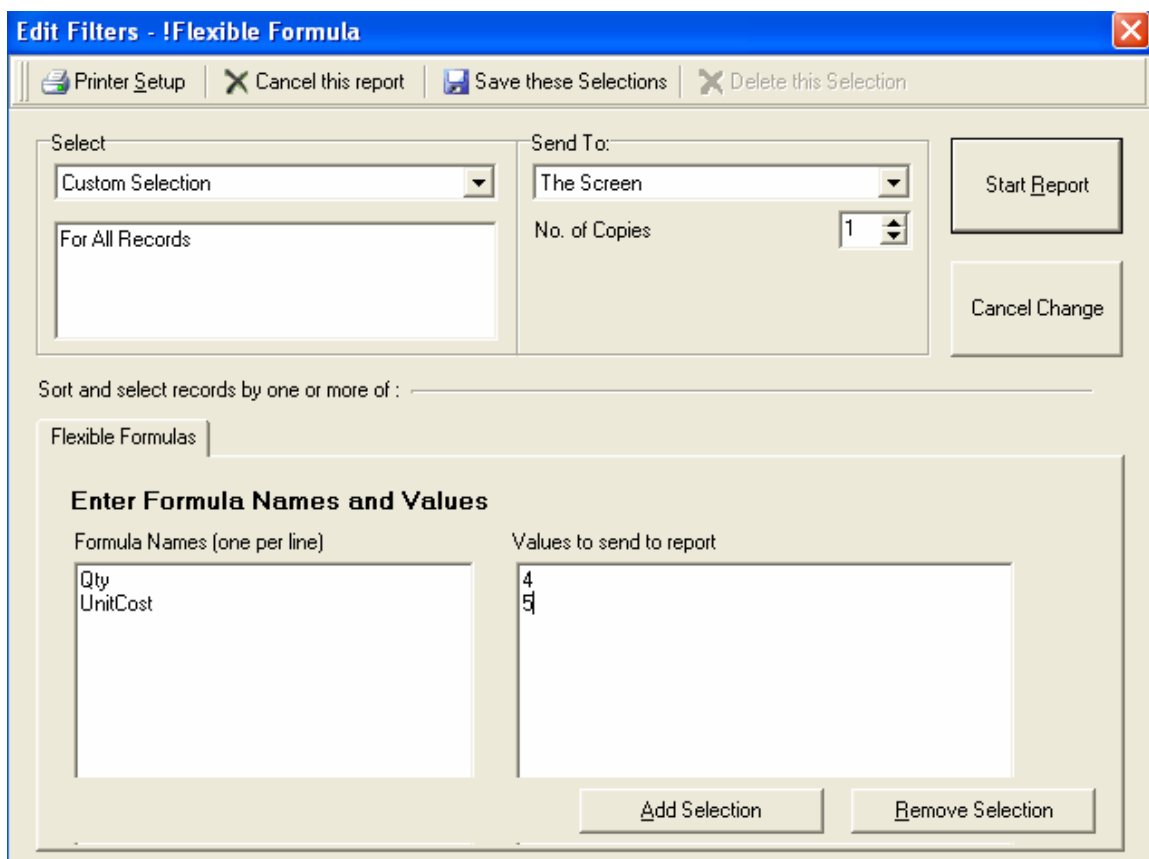
To use the filter when producing the report, enter the names of the formulas to set values for in the Formula Names text box on the left, separating each formula name with a new line. Enter the formula values in the Values to send to report text box on the right, again separating each value with a new line.

For example, to set the @Qty of a report to 4, and @UnitCost to 5, the Formula Names box will contain:

Qty
UnitCost

The Values to send to report box will contain:

4
5



Advanced Business Manager Pty Ltd



Suite 2/599 Doncaster Road
Doncaster, VIC 3108
ACN 073 061 677

Email: abmsupport@advancedbusinessmanager.com.au
Tel: (03) 9532 4199 Fax: (03) 9840 1799
Website: www.advancedbusinessmanager.com.au

*THIS BULLETIN IS PROVIDED FOR INFORMATIONAL PURPOSES ONLY. The information contained in this document represents the current view of Advanced Business Manager on the issues discussed as of the date of publication. Because Advanced Business Manager must respond to change in market conditions, it should not be interpreted to be a commitment on the part of Advanced Business Manager and Advanced Business Manager cannot guarantee the accuracy of any information presented after the date of publication.

INFORMATION PROVIDED IN THIS DOCUMENT IS PROVIDED 'AS IS' WITHOUT WARRANTY OF ANY KIND, EITHER EXPRESS OR IMPLIED, INCLUDING BUT NOT LIMITED TO THE IMPLIED WARRANTIES OF MERCHANTABILITY, FITNESS FOR A PARTICULAR PURPOSE AND FREEDOM FROM INFRINGEMENT.

The user assumes the entire risk as to the accuracy and the use of this document.