

Advanced Business Manager Pty Ltd



Suite 2/599 Doncaster Road Email: abmsupport@advancedbusinessmanager.com.au
Doncaster, VIC 3108 Tel: (03) 9532 4199 Fax: (03) 9840 1799
ACN 073 061 677 Website: www.advancedbusinessmanager.com.au

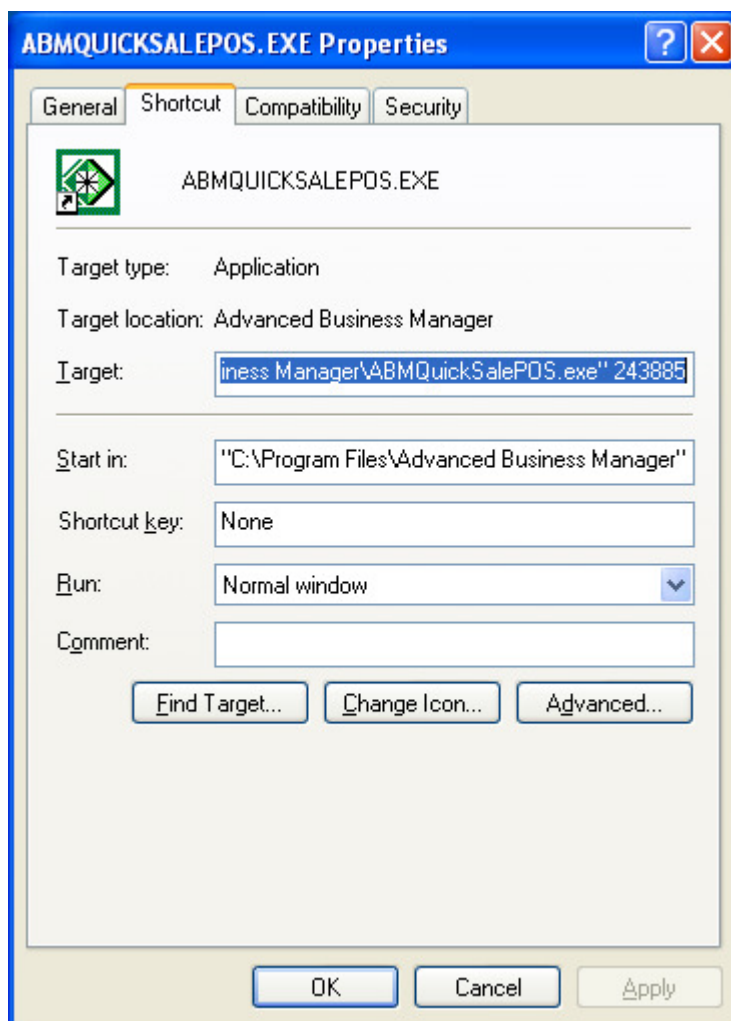
Support Bulletin # 79 ABM Quick Sale POS Cash Draw Poll Display Printer Settings

SETTING UP A DESKTOP SHORTCUT TO RUN ABMQUICKSALE POS

ABM Quick Sale POS can run as a desktop shortcut on a workstation by setting up a Windows shortcut with the following parameters

"C:\Program Files\Advanced Business Manager\ABMQuickSalePOS.exe" 243885

Where 243885 is the CompanyId of the ABM database you will be accessing.



SETTING UP THE CASH DRAW

The cash draw settings are entered by going into Settings -> Cash Draw Settings

The Cash draw codes can be entered as ASCII characters

For example if the decimal codes to open the cash draw are:

Advanced Business Manager Pty Ltd



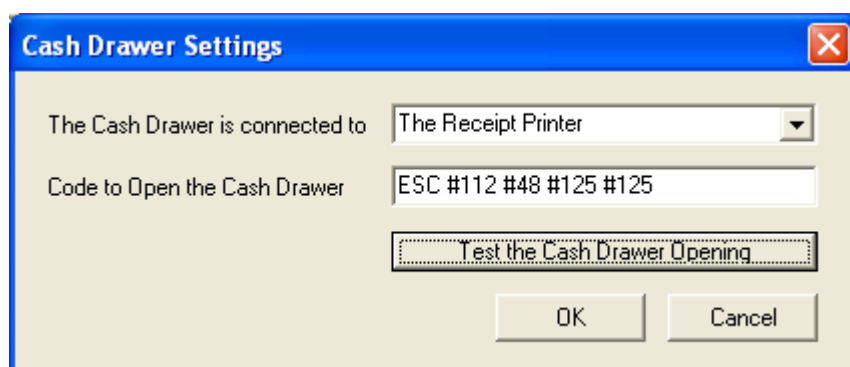
Suite 2/599 Doncaster Road
Doncaster, VIC 3108
ACN 073 061 677

Email: abmsupport@advancedbusinessmanager.com.au
Tel: (03) 9532 4199 Fax: (03) 9840 1799
Website: www.advancedbusinessmanager.com.au

27 112 48 125 125

they can be entered in the following format where _ is a space

ESC_#112_#48_#125_#125



SETTING UP THE POLL DISPLAY

The poll display settings are entered by going into Settings -> Poll Display Settings.

Before setting up the poll display in ABMQuickSalePOS, test the Poll display from a DOS command prompt.

Open a command prompt and ran the following command if the poll display is connected to COM1

```
mode com1:9600,N,8,1 ENTER
```

If you are using an LPT as COM1 you will need to run

```
mode lpt3:=COM1 ENTER  
mode com1:9600,N,8,1 ENTER
```

Then send sample text from a command prompt to the display to ensure it is accepting output

From a command prompt type

```
Copy con com1 ENTER
```

```
Sample text ENTER (Sample text will then show on the pole display)
```

```
CTRL C to get out
```

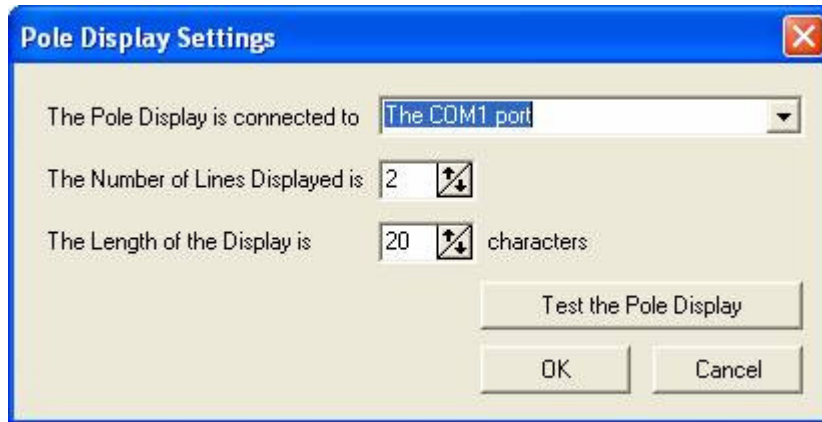
Then go into ABM and ensure the following is set

Advanced Business Manager Pty Ltd



Suite 2/599 Doncaster Road
Doncaster, VIC 3108
ACN 073 061 677

Email: abmsupport@advancedbusinessmanager.com.au
Tel: (03) 9532 4199 Fax: (03) 9840 1799
Website: www.advancedbusinessmanager.com.au



Click on test the pole display and the correct output will appear.

One important point is that no other software that accesses the same COM port should be running in the background at any point in time on this machine as there would be a conflict with the com port.

PRINTING A DOCKET WITH MORE THAN 20 LINES

ABMQuickSalePOS allows you to set up different printer types. The two main types supported are strip printers and windows printers.

Strip printers are serial devices which print continuously and have no pages. If set to use a Windows printer, when printing the docket, you are limited to the number of lines the Windows printer will support on one page

If you want a windows printer to act as a strip printer then you need to find a setting which makes the page length infinite in the Windows printer driver.

If the Windows printer driver does not have such a setting and you have a strip printer that does not appear on the strip printer list, use the "Other option" as opposed to a Windows printer.

Advanced Business Manager Pty Ltd



Suite 2/599 Doncaster Road
Doncaster, VIC 3108
ACN 073 061 677

Email: abmsupport@advancedbusinessmanager.com.au
Tel: (03) 9532 4199 Fax: (03) 9840 1799
Website: www.advancedbusinessmanager.com.au

The image shows a 'Printing Settings' dialog box with a blue title bar and a close button (X) in the top right corner. At the top, there are three radio buttons: 'Use a Windows Printer and Crystal Form' (unchecked), 'Use a Receipt Printer' (checked), and 'No Printing' (unchecked). Below this, there are several sections:

- Printer Type:** A dropdown menu currently showing 'Other'.
- Connected to:** A list box showing 'Star SP2000', 'Star SP542', and 'Other' (selected).
- Lines to Feed before Cutting the Paper:** A numeric spinner set to '10'.
- Printer Cutting Code:** An empty text input field.
- Sales Docket Header:** A list box showing various network paths like 'Windows-\\io\Brother MFC-8840D', 'Windows-\\IO\HP4000 Developm', 'Windows-\\IO\HP4000 Support', 'Windows-\\IO\HP4M', and 'Windows-Sybase Data\Window PS'.
- Sales Docket Footer:** Radio buttons for 'Left', 'Centre' (selected), and 'Right'.
- Preview Area:** A large text area showing a sample receipt with the text: 'EVALUATION COMPANY', 'Suite 123, 48 Anywhere Highway, Anytown, Anywhere 1234', and 'TAX INVOICE'. Below this, another preview area shows 'THANK YOU Please call again'.
- Checkboxes:** Three checked checkboxes: 'Show outstanding account balance on account sales receipts', 'Show customer name on account sales receipts', and 'Show product codes on sales receipts'.
- Note:** A text note stating: 'Note that the above settings apply only to this workstation and need to be repeated for other Points of Sale.'
- Buttons:** 'OK' and 'Cancel' buttons at the bottom right.

**THIS BULLETIN IS PROVIDED FOR INFORMATIONAL PURPOSES ONLY. The information contained in this document represents the current view of Advanced Business Manager on the issues discussed as of the date of publication. Because Advanced Business Manager must respond to change in market conditions, it should not be interpreted to be a commitment on the part of Advanced Business Manager and Advanced Business Manager cannot guarantee the accuracy of any information presented after the date of publication. INFORMATION PROVIDED IN THIS DOCUMENT IS PROVIDED 'AS IS' WITHOUT WARRANTY OF ANY KIND, EITHER EXPRESS OR IMPLIED, INCLUDING BUT NOT LIMITED TO THE IMPLIED WARRANTIES OF MERCHANTABILITY, FITNESS FOR A PARTICULAR PURPOSE AND FREEDOM FROM INFRINGEMENT. The user assumes the entire risk as to the accuracy and the use of this document.*