

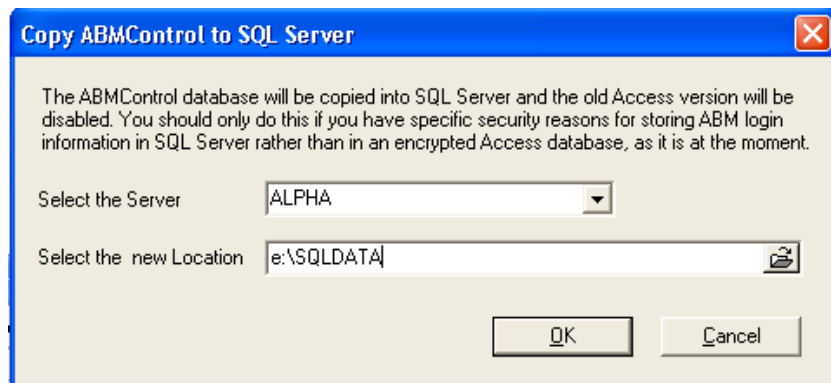
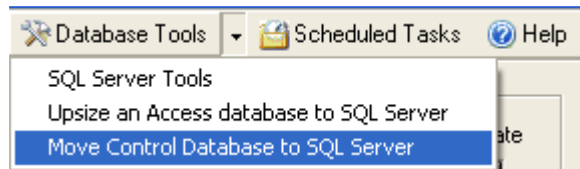
## Support Bulletin # 85 ABM Control File SQL database

### Moving the ABMControl file to SQL Server

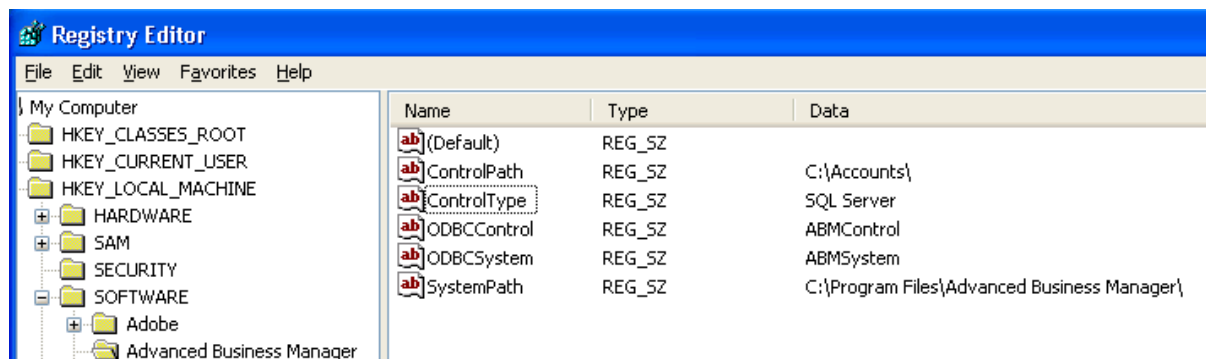
If the site is using MS SQL Server you now have the option to increase security if needed by storing the ABMControl file as a SQL database.

A new registry entry called ControlType has been added to the HKLM\SOFTWARE\ADVANCED BUSINESS MANAGER registry key. If the ABMControl file is set to use an Access database the value is set to "Access". Once the ABMControl file is moved to a server the ControlType value will change to "SQL Server" and a new file called ABMServer.log is created in the Accounts directory.

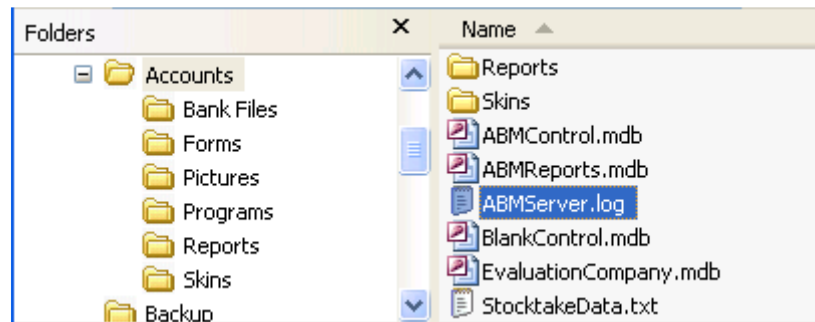
To move the control file select Database Tools/Move Control Database to SQL Server drop down selection from the ABM company list screen.



Enter the Server name and select the location the physical database file will be placed on the server. The HKLM\SOFTWARE\ADVANCED BUSINESS MANAGER\Control Type key is changed to "SQL Server" and the ABMServer.log is placed in the Accounts folder.



The original ABMControl database remains in the Accounts folder, but is no longer used so it can be removed. We recommend you create a copy of the Access ABMControl file in case you ever need to restore it back to Access.



## Troubleshooting ABMControl file Issues

### **SQL Server ABMcontrol file setup:**

- HKLM\Advanced Business Manager\ControlType
  - This key must have value equal to "SQL Server"
- ABMServer.log:
  - Must exist in Accounts directory and has valid information for the server name and log in details.

### **Access ABMcontrol file setup:**

- HKLM\Advanced Business Manager\ControlType
  - This key must have value equal to "Access" (key may also not exist)
- ABMServer.log:
  - Must NOT exist in Accounts directory

### **When ABM 2008 starts:**

1. It looks into the workstation registry to the HKLM\SOFTWARE\Advanced Business Manager folder for the key ControlType.
2. If ControlType = "Access" then it looks for ABMControl.mdb in the data folder.
  - a. If ABMControl.mdb is found then it uses it to start ABM
  - b. If ABMControl.mdb is missing then it looks for ABMServer.log in the data folder
    - i. If ABMServer.log exists then the user has changed ABMControl to SQL Server and so ControlType is changed to "SQL Server" and ABMControl.mdf is used to start ABM.
    - j. If ABMServer.log does not exist then the user is asked for the location of ABMControl.mdb or BlankControl.mdb is used for a new installation.
3. If ControlType = "SQL Server" then it looks for ABMServer.log which it reads and decrypts to obtain the server name and log in details.
  - a. If ABMServer.log exists and the contents are correct then it uses these to open ABMControl.mdf and uses it to start ABM.
  - b. If ABMServer.log does not exist or the contents are wrong (for example the user has changed the server or the SQL login password) then a window appears

# Advanced Business Manager Pty Ltd



Suite 2/599 Doncaster Road  
Doncaster, VIC 3108  
ACN 073 061 677

Email: [abmsupport@advancedbusinessmanager.com.au](mailto:abmsupport@advancedbusinessmanager.com.au)  
Tel: (03) 9532 4199 Fax: (03) 9840 1799  
Website: [www.advancedbusinessmanager.com.au](http://www.advancedbusinessmanager.com.au)

asking for that information. ABMServer.log is then updated and ABMControl.mdf is used to start ABM.

## ***To restore ABM to use ABMControl.mdb:***

1. Delete ABMServer.log if it exists in the datafolder.
2. Restore ABMControl.mdb into the data folder if it is missing.
3. Delete HKEY\_LOCAL\_MACHINE\SOFTWARE\Advanced Business Manager\ControlType or set it to "Access".

## ***To restore ABM to use ABMControl.mdf:***

1. Set HKEY\_LOCAL\_MACHINE\SOFTWARE\Advanced Business Manager\ControlType to "SQL Server".
2. Check that ABMControl.mdf is attached to the server.
3. Fill out the server and login details when requested.

\*THIS BULLETIN IS PROVIDED FOR INFORMATIONAL PURPOSES ONLY. The information contained in this document represents the current view of Advanced Business Manager on the issues discussed as of the date of publication. Because Advanced Business Manager must respond to change in market conditions, it should not be interpreted to be a commitment on the part of Advanced Business Manager and Advanced Business Manager cannot guarantee the accuracy of any information presented after the date of publication.

INFORMATION PROVIDED IN THIS DOCUMENT IS PROVIDED 'AS IS' WITHOUT WARRANTY OF ANY KIND, EITHER EXPRESS OR IMPLIED, INCLUDING BUT NOT LIMITED TO THE IMPLIED WARRANTIES OF MERCHANTABILITY, FITNESS FOR A PARTICULAR PURPOSE AND FREEDOM FROM INFRINGEMENT.

The user assumes the entire risk as to the accuracy and the use of this document.